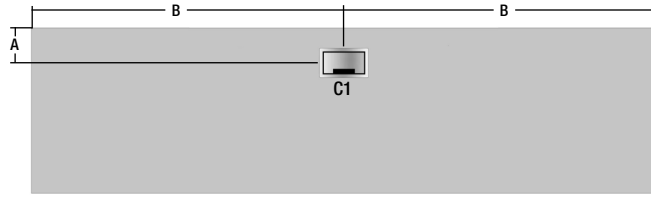


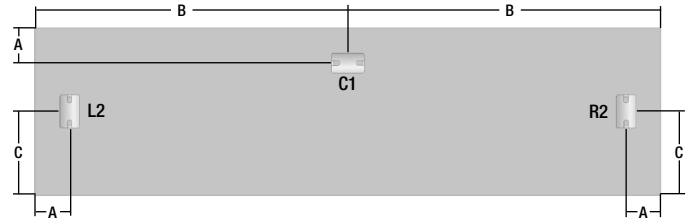
# RECTANGULAR WORKSURFACES - TX-WS01-XXXX

## 19" Deep with Hinged Grommet



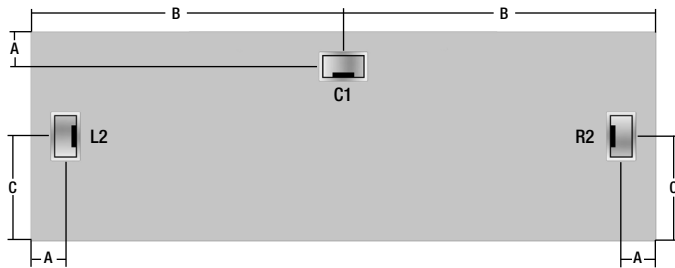
| Item Code    | A  | B  |
|--------------|----|----|
| TX-WS01-1912 | NA | NA |
| TX-WS01-1918 | NA | NA |
| TX-WS01-1924 | 5  | 12 |
| TX-WS01-1930 | 5  | 15 |
| TX-WS01-1936 | 5  | 18 |
| TX-WS01-1942 | 5  | 21 |
| TX-WS01-1948 | 5  | 24 |
| TX-WS01-1954 | 5  | 27 |
| TX-WS01-1960 | 5  | 30 |
| TX-WS01-1966 | 5  | 33 |
| TX-WS01-1972 | 5  | 36 |
| TX-WS01-1978 | 5  | 39 |
| TX-WS01-1984 | 5  | 42 |

## 19" Deep with Pass-Through Grommet



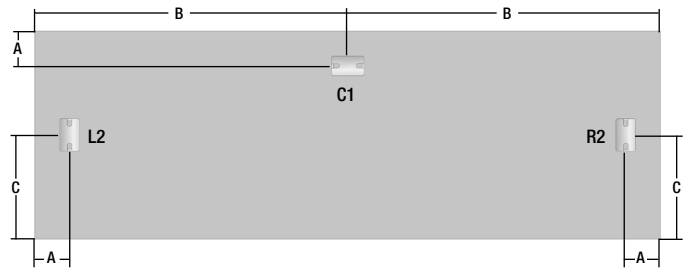
| Item Code    | A  | B  | C   |
|--------------|----|----|-----|
| TX-WS01-1912 | NA | NA | NA  |
| TX-WS01-1918 | NA | NA | NA  |
| TX-WS01-1924 | 4  | 12 | 9.5 |
| TX-WS01-1930 | 4  | 15 | 9.5 |
| TX-WS01-1936 | 4  | 18 | 9.5 |
| TX-WS01-1942 | 4  | 21 | 9.5 |
| TX-WS01-1948 | 4  | 24 | 9.5 |
| TX-WS01-1954 | 4  | 27 | 9.5 |
| TX-WS01-1960 | 4  | 30 | 9.5 |
| TX-WS01-1966 | 4  | 33 | 9.5 |
| TX-WS01-1972 | 4  | 36 | 9.5 |
| TX-WS01-1978 | 4  | 39 | 9.5 |
| TX-WS01-1984 | 4  | 42 | 9.5 |

## 24" Deep with Hinged Grommet



| Item Code    | A  | B  | C  |
|--------------|----|----|----|
| TX-WS01-2412 | NA | NA | NA |
| TX-WS01-2418 | NA | NA | NA |
| TX-WS01-2424 | 5  | 12 | 12 |
| TX-WS01-2430 | 5  | 15 | 12 |
| TX-WS01-2436 | 5  | 18 | 12 |
| TX-WS01-2442 | 5  | 21 | 12 |
| TX-WS01-2448 | 5  | 24 | 12 |
| TX-WS01-2454 | 5  | 27 | 12 |
| TX-WS01-2460 | 5  | 30 | 12 |
| TX-WS01-2466 | 5  | 33 | 12 |
| TX-WS01-2472 | 5  | 36 | 12 |
| TX-WS01-2478 | 5  | 39 | 12 |
| TX-WS01-2484 | 5  | 42 | 12 |

## 24" Deep with Pass-Through Grommet



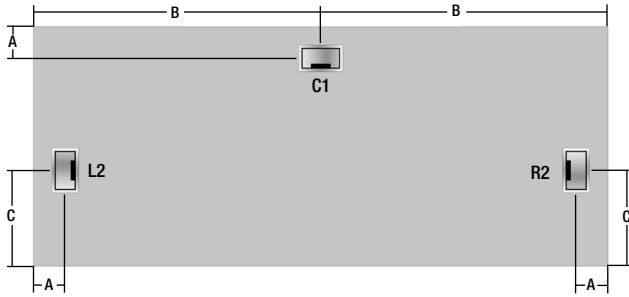
| Item Code    | A  | B  | C  |
|--------------|----|----|----|
| TX-WS01-2412 | NA | NA | NA |
| TX-WS01-2418 | NA | NA | NA |
| TX-WS01-2424 | 4  | 12 | 12 |
| TX-WS01-2430 | 4  | 15 | 12 |
| TX-WS01-2436 | 4  | 18 | 12 |
| TX-WS01-2442 | 4  | 21 | 12 |
| TX-WS01-2448 | 4  | 24 | 12 |
| TX-WS01-2454 | 4  | 27 | 12 |
| TX-WS01-2460 | 4  | 30 | 12 |
| TX-WS01-2466 | 4  | 33 | 12 |
| TX-WS01-2472 | 4  | 36 | 12 |
| TX-WS01-2478 | 4  | 39 | 12 |
| TX-WS01-2484 | 4  | 42 | 12 |

### NOTES:

- C1 is not compatible with 2" thick hanging modesty panels (TX-2MOD). All other hanging modesty panels may only be used if placed flush to the approach edge of the worksurface.
- Pass Through Grommets are shown as rectangular steel grommet AC-GROM-35. Locations also apply to round black plastic grommet AC-GROM-1 and round steel grommet AC-GROM-6.

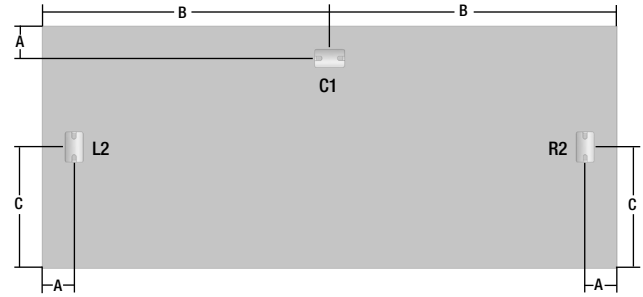
# RECTANGULAR WORKSURFACES - TX-WS01-XXXX

## 30" Deep with Hinged Grommet



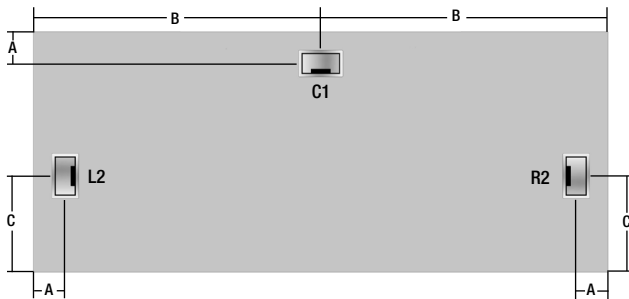
| Item Code    | A  | B  | C  |
|--------------|----|----|----|
| TX-WS01-3012 | NA | NA | NA |
| TX-WS01-3018 | NA | NA | NA |
| TX-WS01-3024 | 5  | 12 | 12 |
| TX-WS01-3030 | 5  | 15 | 12 |
| TX-WS01-3036 | 5  | 18 | 12 |
| TX-WS01-3042 | 5  | 21 | 12 |
| TX-WS01-3048 | 5  | 24 | 12 |
| TX-WS01-3054 | 5  | 27 | 12 |
| TX-WS01-3060 | 5  | 30 | 12 |
| TX-WS01-3066 | 5  | 33 | 12 |
| TX-WS01-3072 | 5  | 36 | 12 |
| TX-WS01-3078 | 5  | 39 | 12 |
| TX-WS01-3084 | 5  | 42 | 12 |

## 30" Deep with Pass-Through Grommet



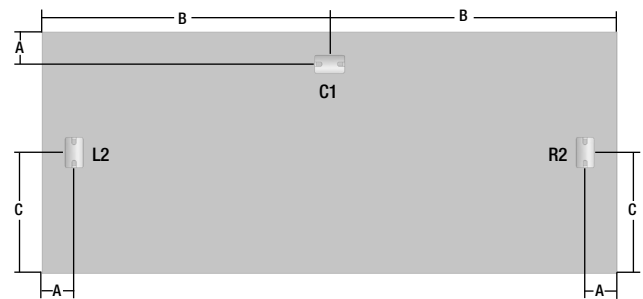
| Item Code    | A  | B  | C  |
|--------------|----|----|----|
| TX-WS01-3012 | NA | NA | NA |
| TX-WS01-3018 | NA | NA | NA |
| TX-WS01-3024 | 4  | 12 | 15 |
| TX-WS01-3030 | 4  | 15 | 15 |
| TX-WS01-3036 | 4  | 18 | 15 |
| TX-WS01-3042 | 4  | 21 | 15 |
| TX-WS01-3048 | 4  | 24 | 15 |
| TX-WS01-3054 | 4  | 27 | 15 |
| TX-WS01-3060 | 4  | 30 | 15 |
| TX-WS01-3066 | 4  | 33 | 15 |
| TX-WS01-3072 | 4  | 36 | 15 |
| TX-WS01-3078 | 4  | 39 | 15 |
| TX-WS01-3084 | 4  | 42 | 15 |

## 36" Deep with Hinged Grommet



| Item Code    | A  | B  | C  |
|--------------|----|----|----|
| TX-WS01-3612 | NA | NA | NA |
| TX-WS01-3618 | NA | NA | NA |
| TX-WS01-3624 | 5  | 12 | 12 |
| TX-WS01-3630 | 5  | 15 | 12 |
| TX-WS01-3636 | 5  | 18 | 12 |
| TX-WS01-3642 | 5  | 21 | 12 |
| TX-WS01-3648 | 5  | 24 | 12 |
| TX-WS01-3654 | 5  | 27 | 12 |
| TX-WS01-3660 | 5  | 30 | 12 |
| TX-WS01-3666 | 5  | 33 | 12 |
| TX-WS01-3672 | 5  | 36 | 12 |
| TX-WS01-3678 | 5  | 39 | 12 |
| TX-WS01-3684 | 5  | 42 | 12 |

## 36" Deep with Pass-Through Grommet



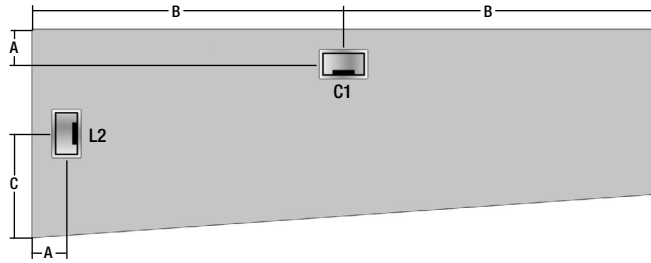
| Item Code    | A  | B  | C  |
|--------------|----|----|----|
| TX-WS01-3612 | NA | NA | NA |
| TX-WS01-3618 | NA | NA | NA |
| TX-WS01-3624 | 4  | 12 | 18 |
| TX-WS01-3630 | 4  | 15 | 18 |
| TX-WS01-3636 | 4  | 18 | 18 |
| TX-WS01-3642 | 4  | 21 | 18 |
| TX-WS01-3648 | 4  | 24 | 18 |
| TX-WS01-3654 | 4  | 27 | 18 |
| TX-WS01-3660 | 4  | 30 | 18 |
| TX-WS01-3666 | 4  | 33 | 18 |
| TX-WS01-3672 | 4  | 36 | 18 |
| TX-WS01-3678 | 4  | 39 | 18 |
| TX-WS01-3684 | 4  | 42 | 18 |

### NOTES:

- C1 is not compatible with 2" thick hanging modesty panels (TX-2MOD). All other hanging modesty panels may only be used if placed flush to the approach edge of the worksurface.
- Pass Through Grommets are shown as rectangular steel grommet AC-GROM-35. Locations also apply to round black plastic grommet AC-GROM-1 and round steel grommet AC-GROM-6.

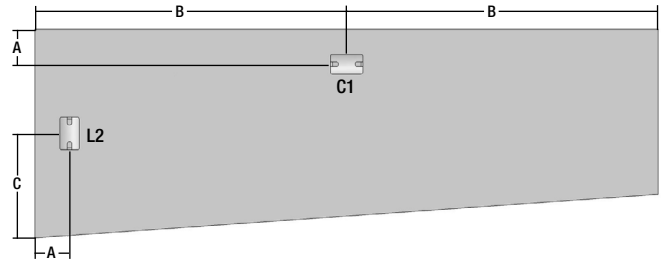
# WEDGE WORKSURFACES - TX-WS02-XXXX

## 24" Deep with Hinged Grommet



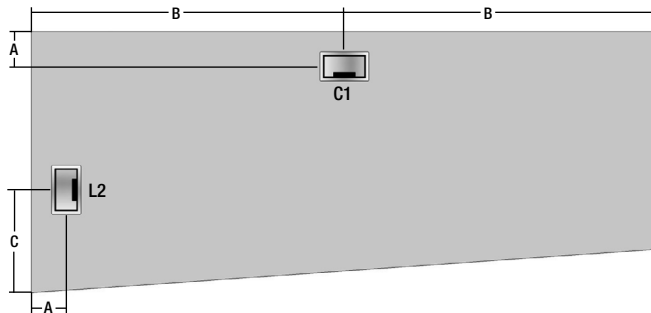
| Item Code    | A | B  | C  |
|--------------|---|----|----|
| TX-WS02-2460 | 5 | 30 | 12 |
| TX-WS02-2466 | 5 | 33 | 12 |
| TX-WS02-2472 | 5 | 36 | 12 |
| TX-WS02-2478 | 5 | 39 | 12 |

## 24" Deep with Pass-Through Grommet



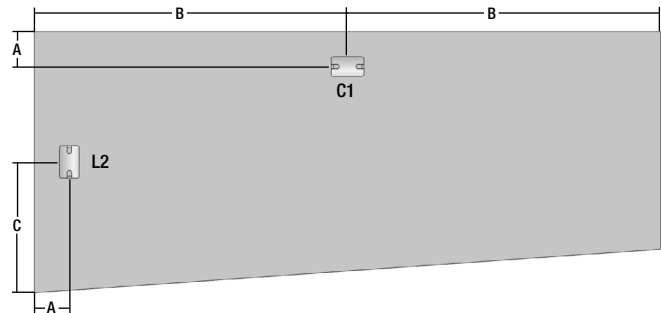
| Item Code    | A | B  | C  |
|--------------|---|----|----|
| TX-WS02-2460 | 4 | 30 | 12 |
| TX-WS02-2466 | 4 | 33 | 12 |
| TX-WS02-2472 | 4 | 36 | 12 |
| TX-WS02-2478 | 4 | 39 | 12 |

## 30" Deep with Hinged Grommet



| Item Code    | A | B  | C  |
|--------------|---|----|----|
| TX-WS02-3060 | 5 | 30 | 12 |
| TX-WS02-3066 | 5 | 33 | 12 |
| TX-WS02-3072 | 5 | 36 | 12 |
| TX-WS02-3078 | 5 | 39 | 12 |

## 30" Deep with Pass-Through Grommet

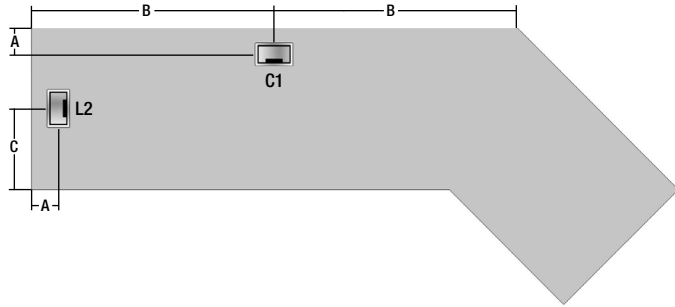


| Item Code    | A | B  | C  |
|--------------|---|----|----|
| TX-WS02-3060 | 4 | 30 | 15 |
| TX-WS02-3066 | 4 | 33 | 15 |
| TX-WS02-3072 | 4 | 36 | 15 |
| TX-WS02-3078 | 4 | 39 | 15 |

### NOTES:

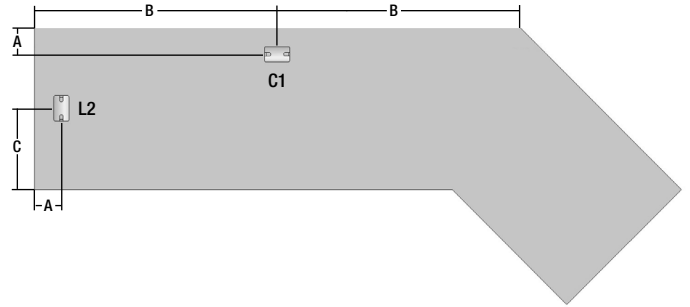
- C1 is not compatible with 2" thick hanging modesty panels (TX-2MOD). All other hanging modesty panels may only be used if placed flush to the approach edge of the worksurface.
- Pass Through Grommets are shown as rectangular steel grommet AC-GROM-35. Locations also apply to round black plastic grommet AC-GROM-1 and round steel grommet AC-GROM-6.

**24" Deep with Hinged Grommet**



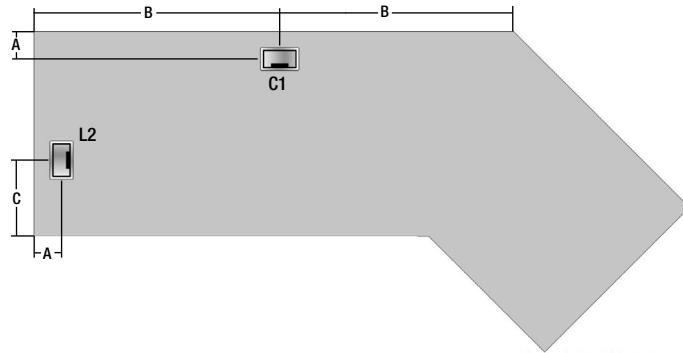
| Item Code    | A | B  | C  |
|--------------|---|----|----|
| TX-WS03-2484 | 5 | 30 | 12 |
| TX-WS03-2490 | 5 | 33 | 12 |
| TX-WS03-2496 | 5 | 36 | 12 |

**24" Deep with Pass-Through Grommet**



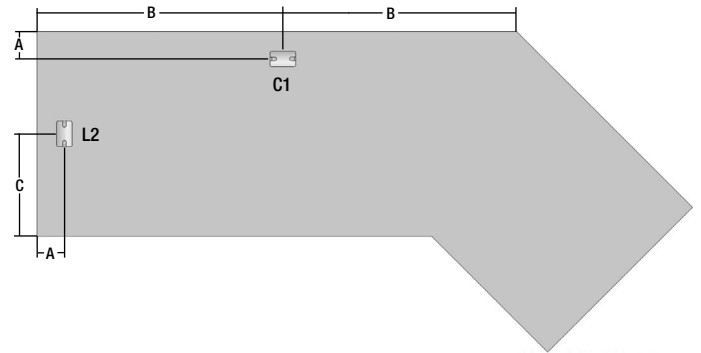
| Item Code    | A | B  | C  |
|--------------|---|----|----|
| TX-WS03-2484 | 4 | 30 | 12 |
| TX-WS03-2490 | 4 | 33 | 12 |
| TX-WS03-2496 | 4 | 36 | 12 |

**30" Deep with Hinged Grommet**



| Item Code    | A | B  | C  |
|--------------|---|----|----|
| TX-WS03-3084 | 5 | 30 | 12 |
| TX-WS03-3090 | 5 | 33 | 12 |
| TX-WS03-3096 | 5 | 36 | 12 |

**30" Deep with Pass-Through Grommet**



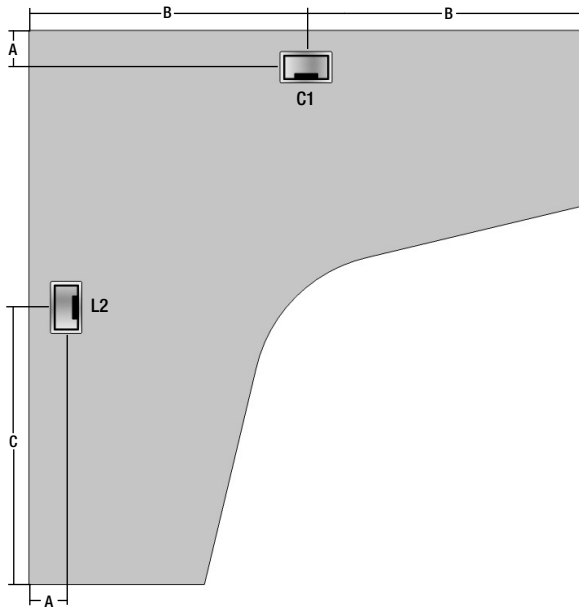
| Item Code    | A | B  | C  |
|--------------|---|----|----|
| TX-WS03-3084 | 4 | 30 | 15 |
| TX-WS03-3090 | 4 | 33 | 15 |
| TX-WS03-3096 | 4 | 36 | 15 |

**NOTES:**

- C1 is not compatible with 2" thick hanging modesty panels (TX-2MOD). All other hanging modesty panels may only be used if placed flush to the approach edge of the worksurface.
- Pass Through Grommets are shown as rectangular steel grommet AC-GROM-35. Locations also apply to round black plastic grommet AC-GROM-1 and round steel grommet AC-GROM-6.

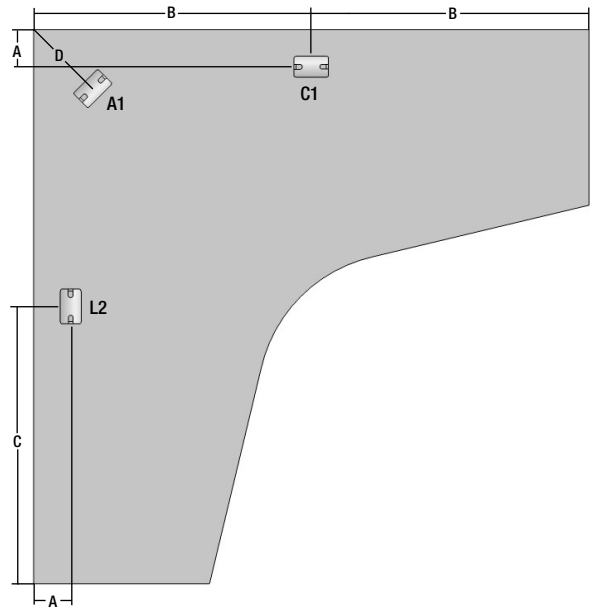
# TAPERING BOOMERANG WORKSURFACES (SYMMETRICAL)- TX-WS05-XXXX

## 19" Deep with Hinged Grommet



| Item Code    | A | B  | C  |
|--------------|---|----|----|
| TX-WS05-4848 | 5 | 24 | 24 |
| TX-WS05-5454 | 5 | 27 | 27 |
| TX-WS05-6060 | 5 | 30 | 30 |

## 19" Deep with Pass-Through Grommet



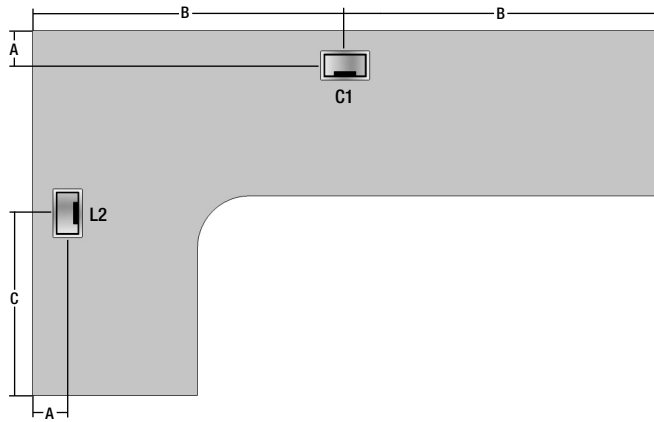
| Item Code    | A | B  | C  | D  |
|--------------|---|----|----|----|
| TX-WS05-4848 | 4 | 24 | 24 | 15 |
| TX-WS05-5454 | 4 | 27 | 27 | 15 |
| TX-WS05-6060 | 4 | 30 | 30 | 15 |

### NOTES:

- C1 is not compatible with 2" thick hanging modesty panels (TX-2MOD). All other hanging modesty panels may only be used if placed flush to the approach edge of the worksurface.
- Pass Through Grommets are shown as rectangular steel grommet AC-GROM-35. Locations also apply to round black plastic grommet AC-GROM-1 and round steel grommet AC-GROM-6.

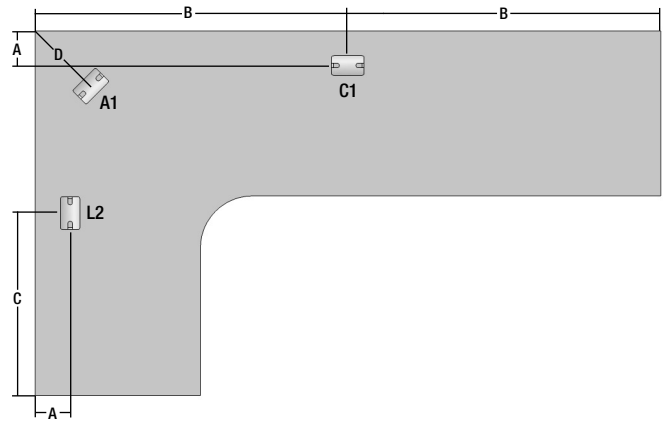
# EXTENDED COMPUTER CORNER WORKSURFACES - TX-WS06-XXXX

## 42" Return Side, 19/19" Deep with Hinged Grommet



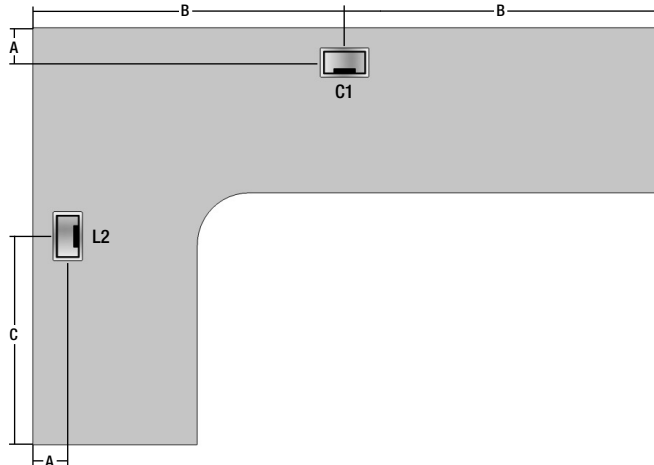
| Item Code    | A | B  | C  |
|--------------|---|----|----|
| TX-WS06-4266 | 5 | 33 | 21 |
| TX-WS06-4272 | 5 | 36 | 21 |
| TX-WS06-4278 | 5 | 39 | 21 |

## 42" Return Side, 19/19" Deep with Pass-Through Grommet



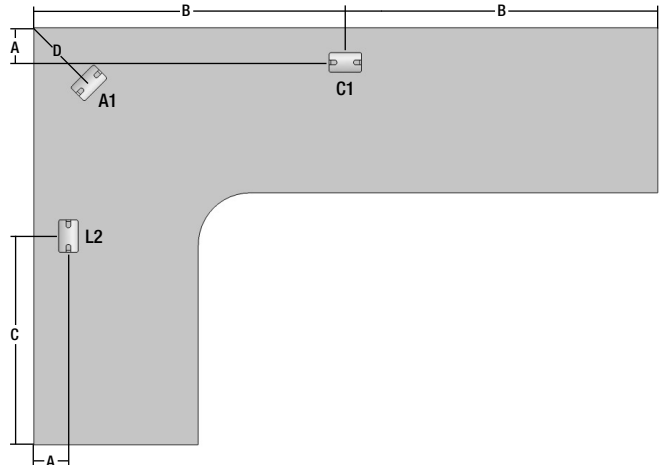
| Item Code    | A | B  | C  | D  |
|--------------|---|----|----|----|
| TX-WS06-4266 | 4 | 33 | 21 | 15 |
| TX-WS06-4272 | 4 | 36 | 21 | 15 |
| TX-WS06-4278 | 4 | 39 | 21 | 15 |

## 48" Return Side, 19/19" Deep with Hinged Grommet



| Item Code    | A | B  | C  |
|--------------|---|----|----|
| TX-WS06-4866 | 5 | 33 | 24 |
| TX-WS06-4872 | 5 | 36 | 24 |
| TX-WS06-4878 | 5 | 39 | 24 |

## 48" Return Side, 19/19" Deep with Pass-Through Grommet



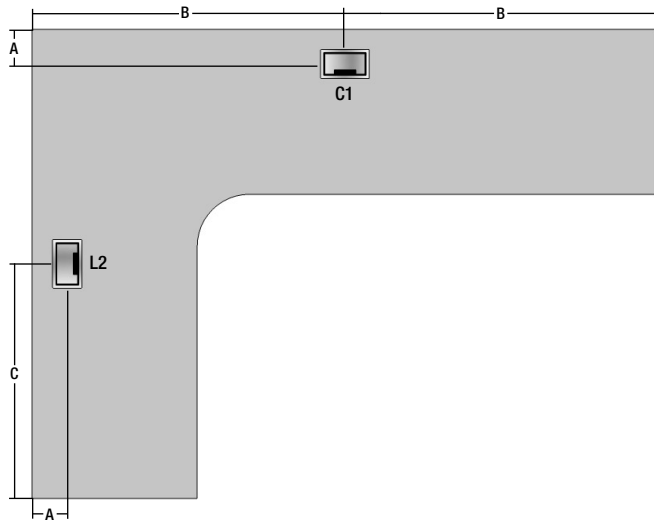
| Item Code    | A | B  | C  | D  |
|--------------|---|----|----|----|
| TX-WS06-4866 | 4 | 33 | 24 | 15 |
| TX-WS06-4872 | 4 | 36 | 24 | 15 |
| TX-WS06-4878 | 4 | 39 | 24 | 15 |

### NOTES:

- C1 is not compatible with 2" thick hanging modesty panels (TX-2MOD). All other hanging modesty panels may only be used if placed flush to the approach edge of the worksurface.
- Pass Through Grommets are shown as rectangular steel grommet AC-GROM-35. Locations also apply to round black plastic grommet AC-GROM-1 and round steel grommet AC-GROM-6.

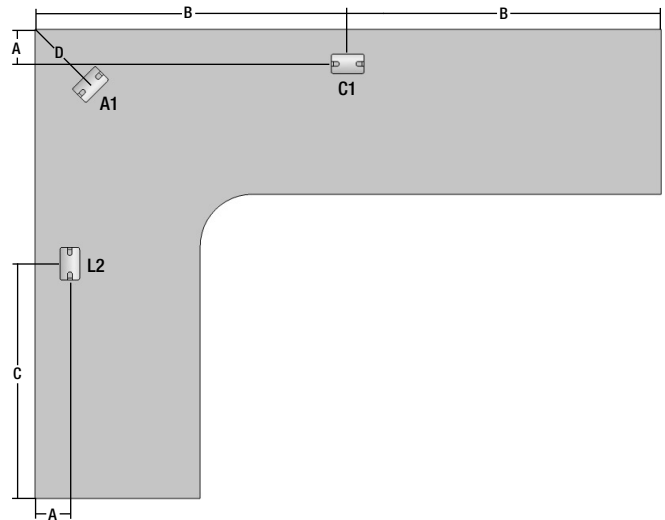
# EXTENDED COMPUTER CORNER WORKSURFACES - TX-WS06-XXXX

## 54" Return Side, 19/19" Deep with Hinged Grommet



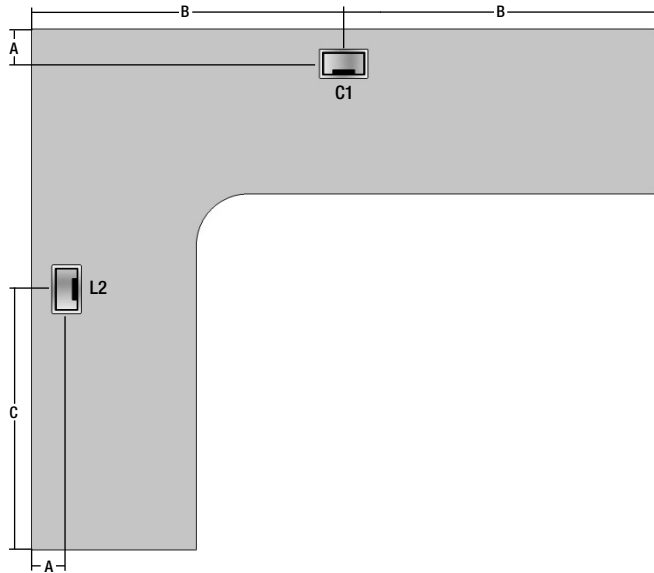
| Item Code    | A | B  | C  |
|--------------|---|----|----|
| TX-WS06-5466 | 5 | 33 | 27 |
| TX-WS06-5472 | 5 | 36 | 27 |
| TX-WS06-5478 | 5 | 39 | 27 |

## 54" Return Side, 19/19" Deep with Pass-Through Grommet



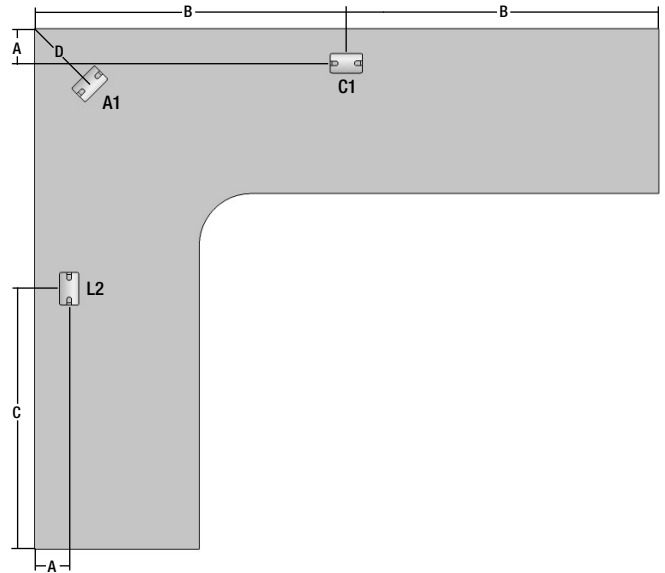
| Item Code    | A | B  | C  | D  |
|--------------|---|----|----|----|
| TX-WS06-5466 | 4 | 33 | 27 | 15 |
| TX-WS06-5472 | 4 | 36 | 27 | 15 |
| TX-WS06-5478 | 4 | 39 | 27 | 15 |

## 60" Return Side, 19/19" Deep with Hinged Grommet



| Item Code    | A | B  | C  |
|--------------|---|----|----|
| TX-WS06-6066 | 5 | 33 | 30 |
| TX-WS06-6072 | 5 | 36 | 30 |
| TX-WS06-6078 | 5 | 39 | 30 |

## 60" Return Side, 19/19" Deep with Pass-Through Grommet



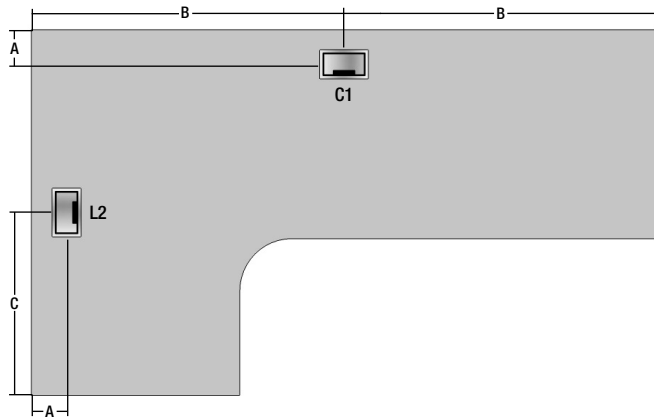
| Item Code    | A | B  | C  | D  |
|--------------|---|----|----|----|
| TX-WS06-6066 | 4 | 33 | 30 | 15 |
| TX-WS06-6072 | 4 | 36 | 30 | 15 |
| TX-WS06-6078 | 4 | 39 | 30 | 15 |

### NOTES:

- C1 is not compatible with 2" thick hanging modesty panels (TX-2MOD). All other hanging modesty panels may only be used if placed flush to the approach edge of the worksurface.
- Pass Through Grommets are shown as rectangular steel grommet AC-GROM-35. Locations also apply to round black plastic grommet AC-GROM-1 and round steel grommet AC-GROM-6.

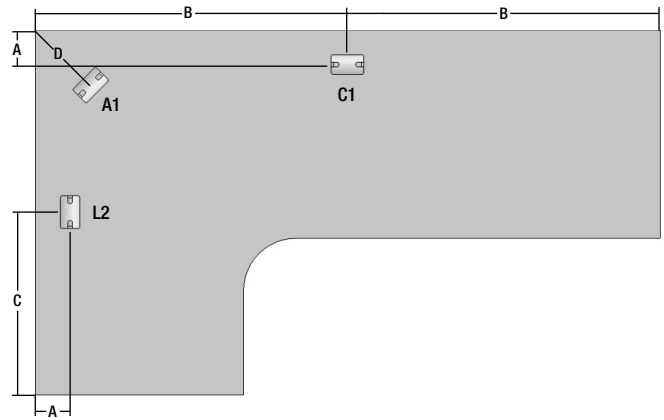
# EXTENDED COMPUTER CORNER WORKSURFACES - TX-WS07-XXXX

## 42" Return Side, 24/24" Deep with Hinged Grommet



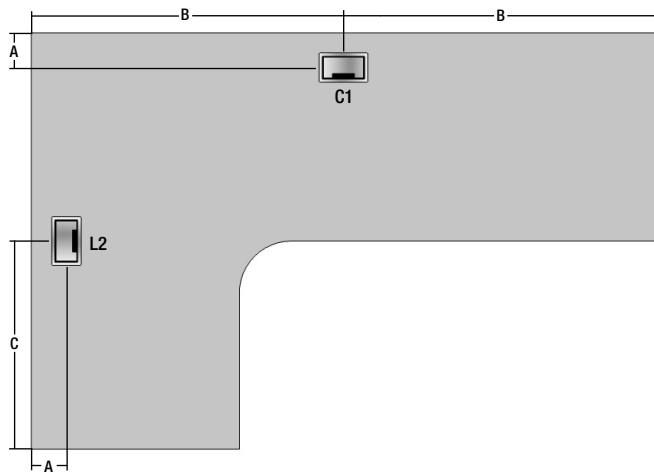
| Item Code    | A | B  | C  |
|--------------|---|----|----|
| TX-WS07-4266 | 5 | 33 | 21 |
| TX-WS07-4272 | 5 | 36 | 21 |
| TX-WS07-4278 | 5 | 39 | 21 |

## 42" Return Side, 24/24" Deep with Pass-Through Grommet



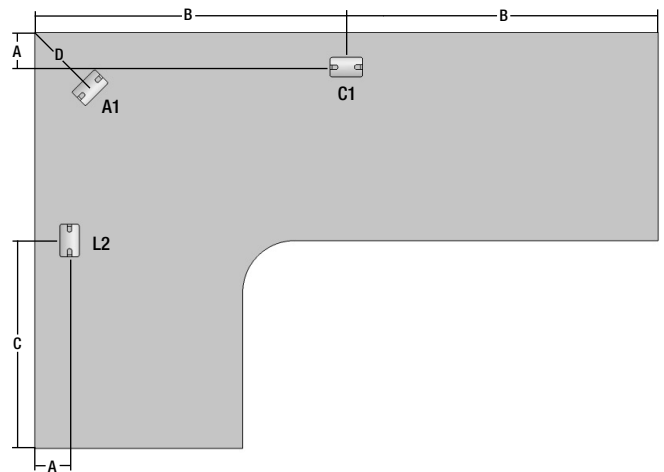
| Item Code    | A | B  | C  | D  |
|--------------|---|----|----|----|
| TX-WS07-4266 | 4 | 33 | 21 | 15 |
| TX-WS07-4272 | 4 | 36 | 21 | 15 |
| TX-WS07-4278 | 4 | 39 | 21 | 15 |

## 48" Return Side, 24/24" Deep with Hinged Grommet



| Item Code    | A | B  | C  |
|--------------|---|----|----|
| TX-WS07-4866 | 5 | 33 | 24 |
| TX-WS07-4872 | 5 | 36 | 24 |
| TX-WS07-4878 | 5 | 39 | 24 |

## 48" Return Side, 24/24" Deep with Pass-Through Grommet



| Item Code    | A | B  | C  | D  |
|--------------|---|----|----|----|
| TX-WS07-4866 | 4 | 33 | 24 | 15 |
| TX-WS07-4872 | 4 | 36 | 24 | 15 |
| TX-WS07-4878 | 4 | 39 | 24 | 15 |

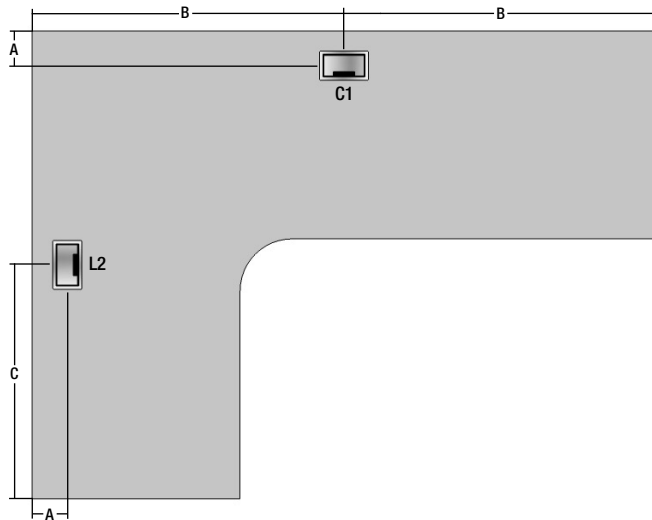
### NOTES:

- C1 is not compatible with 2" thick hanging modesty panels (TX-2MOD). All other hanging modesty panels may only be used if placed flush to the approach edge of the worksurface.
- Pass Through Grommets are shown as rectangular steel grommet AC-GROM-35. Locations also apply to round black plastic grommet AC-GROM-1 and round steel grommet AC-GROM-6.



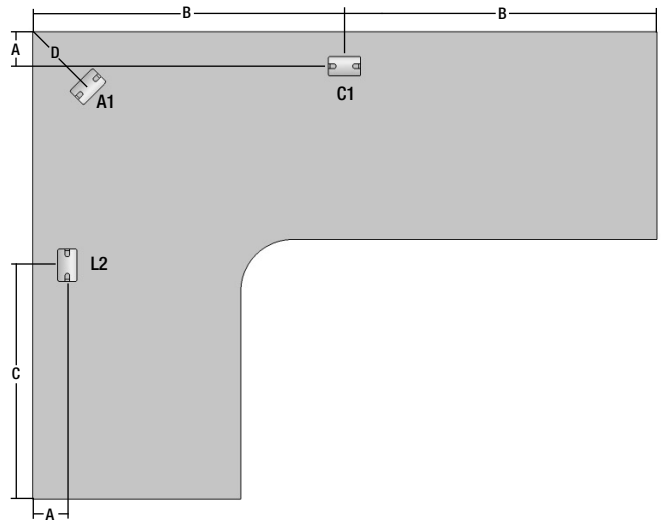
# EXTENDED COMPUTER CORNER WORKSURFACES - TX-WS07-XXXX

## 54" Return Side, 24/24" Deep with Hinged Grommet



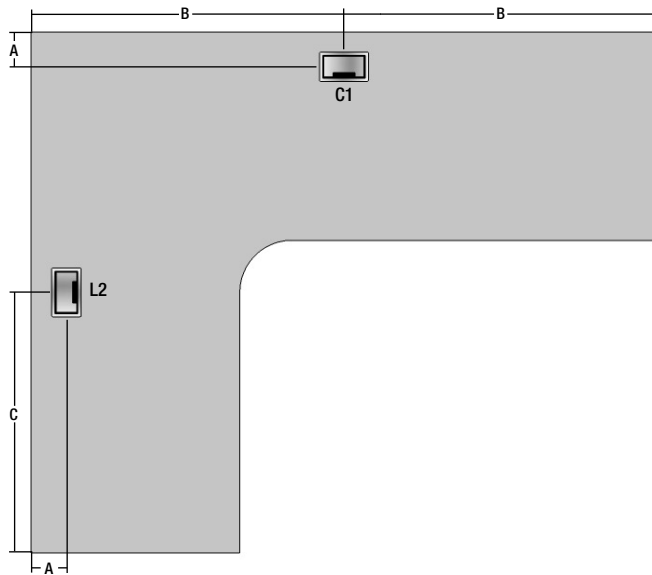
| Item Code    | A | B  | C  |
|--------------|---|----|----|
| TX-WS07-5466 | 5 | 33 | 27 |
| TX-WS07-5472 | 5 | 36 | 27 |
| TX-WS07-5478 | 5 | 39 | 27 |

## 54" Return Side, 24/24" Deep with Pass-Through Grommet



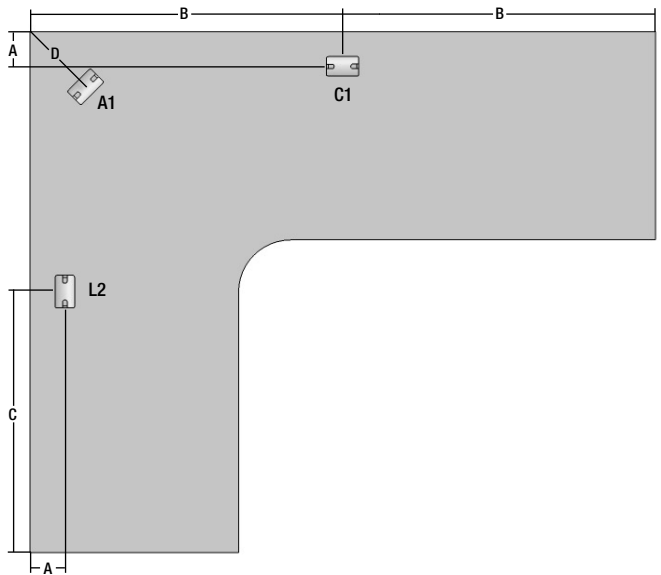
| Item Code    | A | B  | C  | D  |
|--------------|---|----|----|----|
| TX-WS07-5466 | 4 | 33 | 27 | 15 |
| TX-WS07-5472 | 4 | 36 | 27 | 15 |
| TX-WS07-5478 | 4 | 39 | 27 | 15 |

## 60" Return Side, 24/24" Deep with Hinged Grommet



| Item Code    | A | B  | C  |
|--------------|---|----|----|
| TX-WS07-6066 | 5 | 33 | 30 |
| TX-WS07-6072 | 5 | 36 | 30 |
| TX-WS07-6078 | 5 | 39 | 30 |

## 60" Return Side, 24/24" Deep with Pass-Through Grommet



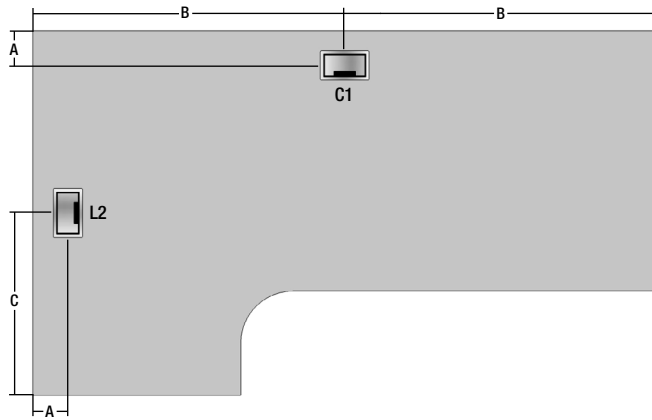
| Item Code    | A | B  | C  | D  |
|--------------|---|----|----|----|
| TX-WS07-6066 | 4 | 33 | 30 | 15 |
| TX-WS07-6072 | 4 | 36 | 30 | 15 |
| TX-WS07-6078 | 4 | 39 | 30 | 15 |

### NOTES:

- C1 is not compatible with 2" thick hanging modesty panels (TX-2MOD). All other hanging modesty panels may only be used if placed flush to the approach edge of the worksurface.
- Pass Through Grommets are shown as rectangular steel grommet AC-GROM-35. Locations also apply to round black plastic grommet AC-GROM-1 and round steel grommet AC-GROM-6.

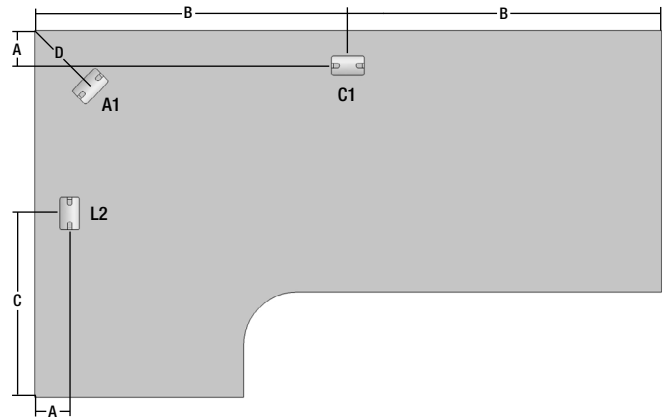
# EXTENDED COMPUTER CORNER WORKSURFACES - TX-WS08-XXXX

## 42" Return Side, 24/30" Deep with Hinged Grommet



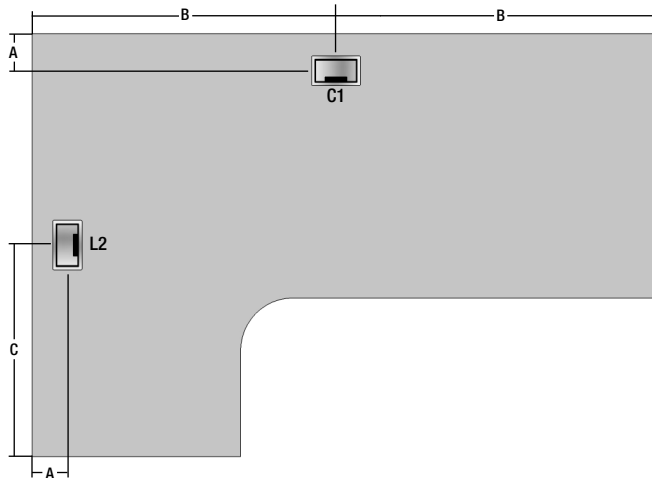
| Item Code    | A | B  | C  |
|--------------|---|----|----|
| TX-WS08-4266 | 5 | 33 | 21 |
| TX-WS08-4272 | 5 | 36 | 21 |
| TX-WS08-4278 | 5 | 39 | 21 |

## 42" Return Side, 24/30" Deep with Pass-Through Grommet



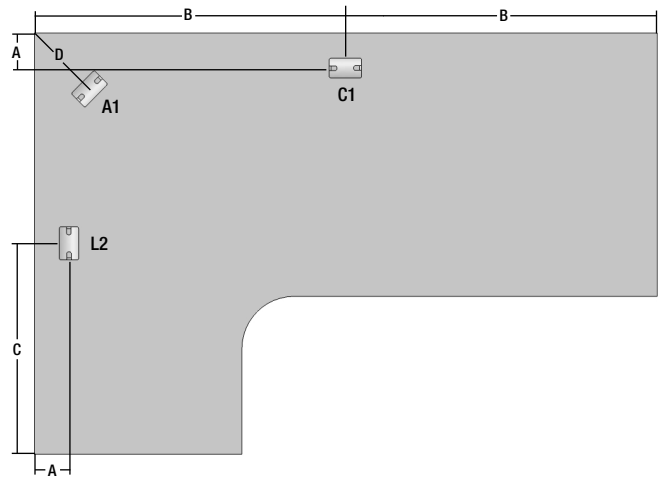
| Item Code    | A | B  | C  | D  |
|--------------|---|----|----|----|
| TX-WS08-4266 | 4 | 33 | 21 | 15 |
| TX-WS08-4272 | 4 | 36 | 21 | 15 |
| TX-WS08-4278 | 4 | 39 | 21 | 15 |

## 48" Return Side, 24/30" Deep with Hinged Grommet



| Item Code    | A | B  | C  |
|--------------|---|----|----|
| TX-WS08-4866 | 5 | 33 | 24 |
| TX-WS08-4872 | 5 | 36 | 24 |
| TX-WS08-4878 | 5 | 39 | 24 |

## 48" Return Side, 24/30" Deep with Pass-Through Grommet



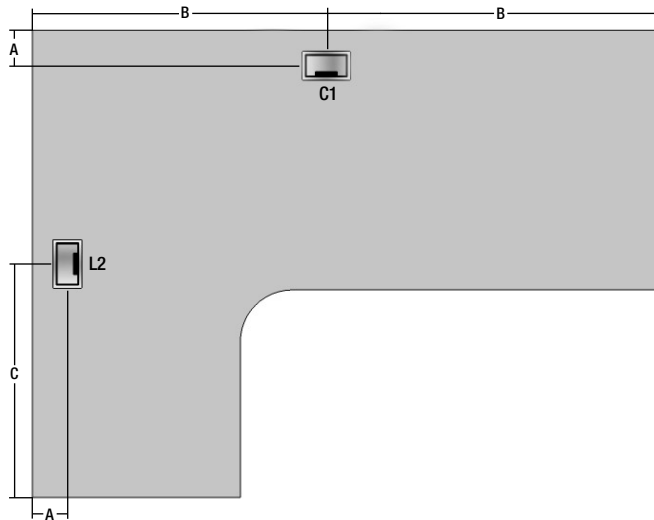
| Item Code    | A | B  | C  | D  |
|--------------|---|----|----|----|
| TX-WS08-4866 | 4 | 33 | 24 | 15 |
| TX-WS08-4872 | 4 | 36 | 24 | 15 |
| TX-WS08-4878 | 4 | 39 | 24 | 15 |

### NOTES:

- C1 is not compatible with 2" thick hanging modesty panels (TX-2MOD). All other hanging modesty panels may only be used if placed flush to the approach edge of the worksurface.
- Pass Through Grommets are shown as rectangular steel grommet AC-GROM-35. Locations also apply to round black plastic grommet AC-GROM-1 and round steel grommet AC-GROM-6.

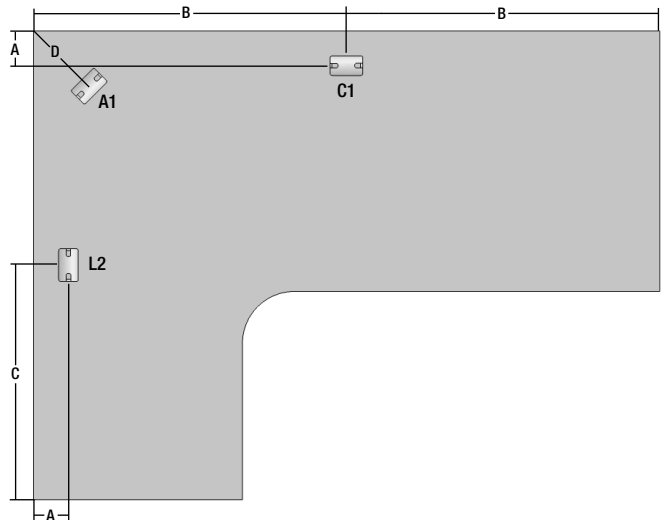
# EXTENDED COMPUTER CORNER WORKSURFACES - TX-WS08-XXXX

## 54" Return Side, 24/30" Deep with Hinged Grommet



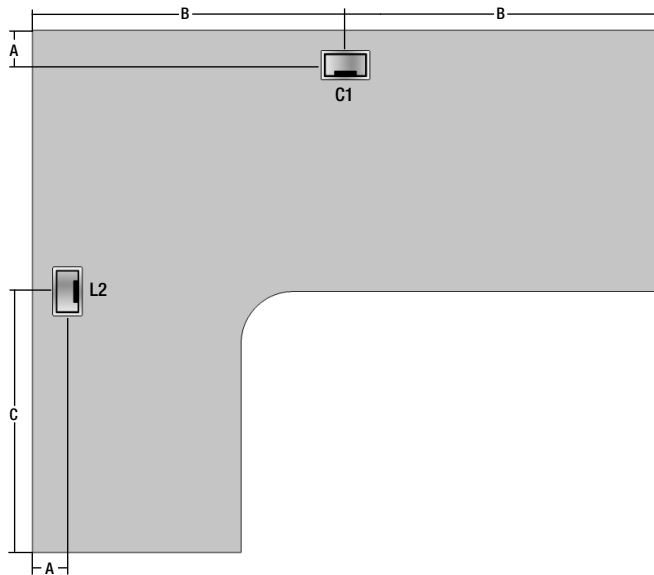
| Item Code    | A | B  | C  |
|--------------|---|----|----|
| TX-WS08-5466 | 5 | 33 | 27 |
| TX-WS08-5472 | 5 | 36 | 27 |
| TX-WS08-5478 | 5 | 39 | 27 |

## 54" Return Side, 24/30" Deep with Pass-Through Grommet



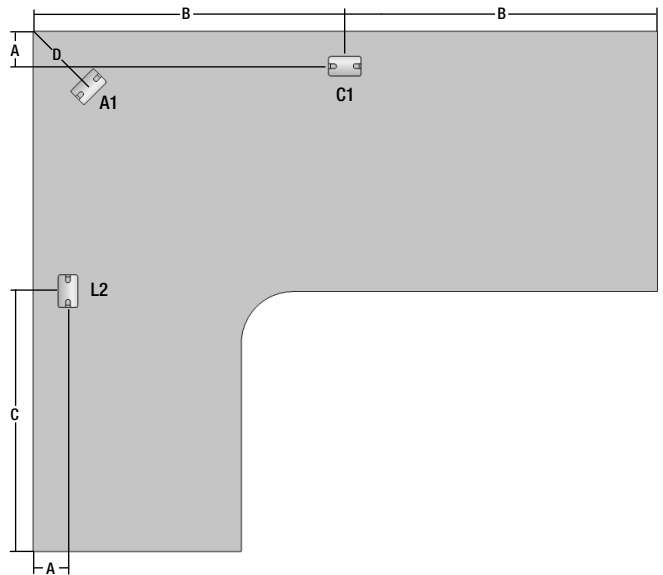
| Item Code    | A | B  | C  | D  |
|--------------|---|----|----|----|
| TX-WS08-5466 | 4 | 33 | 27 | 15 |
| TX-WS08-5472 | 4 | 36 | 27 | 15 |
| TX-WS08-5478 | 4 | 39 | 27 | 15 |

## 60" Return Side, 24/30" Deep with Hinged Grommet



| Item Code    | A | B  | C  |
|--------------|---|----|----|
| TX-WS08-6066 | 5 | 33 | 30 |
| TX-WS08-6072 | 5 | 36 | 30 |
| TX-WS08-6078 | 5 | 39 | 30 |

## 60" Return Side, 24/30" Deep with Pass-Through Grommet



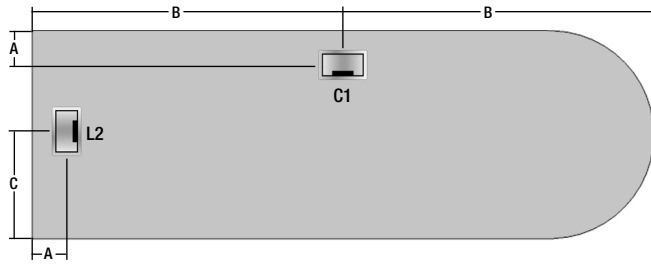
| Item Code    | A | B  | C  | D  |
|--------------|---|----|----|----|
| TX-WS08-6066 | 4 | 33 | 30 | 15 |
| TX-WS08-6072 | 4 | 36 | 30 | 15 |
| TX-WS08-6078 | 4 | 39 | 30 | 15 |

### NOTES:

- C1 is not compatible with 2" thick hanging modesty panels (TX-2MOD). All other hanging modesty panels may only be used if placed flush to the approach edge of the worksurface.
- Pass Through Grommets are shown as rectangular steel grommet AC-GROM-35. Locations also apply to round black plastic grommet AC-GROM-1 and round steel grommet AC-GROM-6.

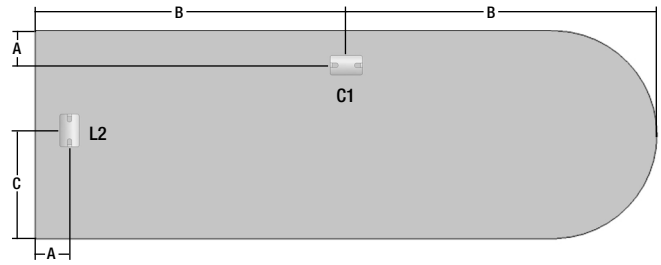
# BULLET PENINSULA WORKSURFACES - TX-WS21-XXXX

## 24" Deep with Hinged Grommet



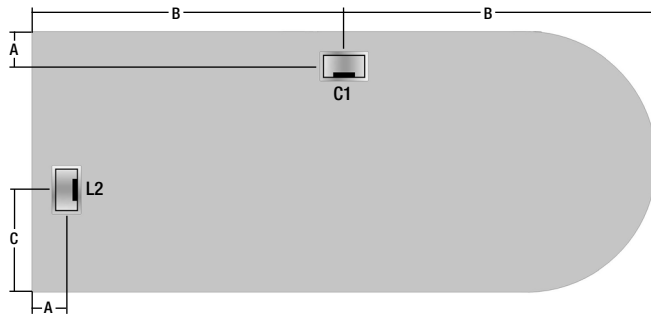
| Item Code    | A | B  | C  |
|--------------|---|----|----|
| TX-WS21-2448 | 5 | 24 | 12 |
| TX-WS21-2454 | 5 | 27 | 12 |
| TX-WS21-2460 | 5 | 30 | 12 |
| TX-WS21-2466 | 5 | 33 | 12 |
| TX-WS21-2472 | 5 | 36 | 12 |

## 24" Deep with Pass-Through Grommet



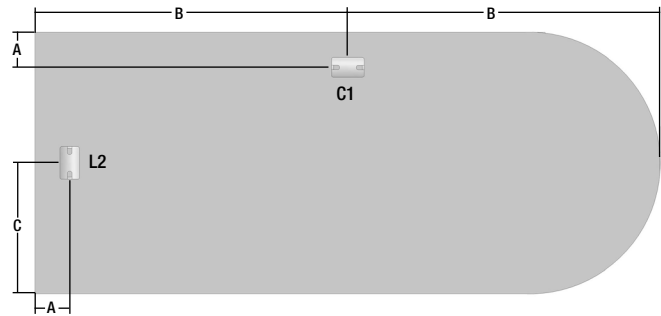
| Item Code    | A | B  | C  |
|--------------|---|----|----|
| TX-WS21-2448 | 4 | 24 | 12 |
| TX-WS21-2454 | 4 | 27 | 12 |
| TX-WS21-2460 | 4 | 30 | 12 |
| TX-WS21-2466 | 4 | 33 | 12 |
| TX-WS21-2472 | 4 | 36 | 12 |

## 30" Deep with Hinged Grommet



| Item Code    | A | B  | C  |
|--------------|---|----|----|
| TX-WS21-3048 | 5 | 24 | 12 |
| TX-WS21-3054 | 5 | 27 | 12 |
| TX-WS21-3060 | 5 | 30 | 12 |
| TX-WS21-3066 | 5 | 33 | 12 |
| TX-WS21-3072 | 5 | 36 | 12 |

## 30" Deep with Pass-Through Grommet



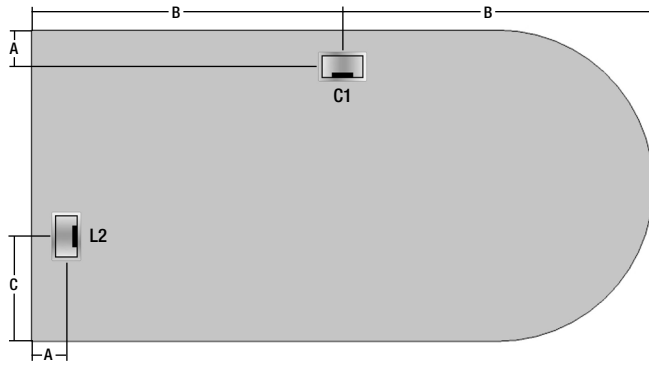
| Item Code    | A | B  | C  |
|--------------|---|----|----|
| TX-WS21-3048 | 4 | 24 | 15 |
| TX-WS21-3054 | 4 | 27 | 15 |
| TX-WS21-3060 | 4 | 30 | 15 |
| TX-WS21-3066 | 4 | 33 | 15 |
| TX-WS21-3072 | 4 | 36 | 15 |

### NOTES:

- C1 is not compatible with 2" thick hanging modesty panels (TX-2MOD). All other hanging modesty panels may only be used if placed flush to the approach edge of the worksurface.
- Pass Through Grommets are shown as rectangular steel grommet AC-GROM-35. Locations also apply to round black plastic grommet AC-GROM-1 and round steel grommet AC-GROM-6.

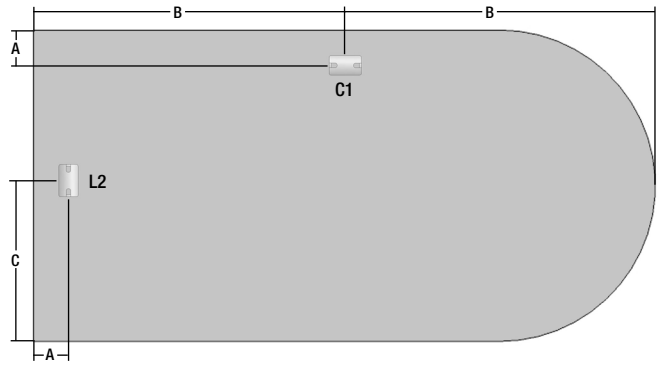
# BULLET PENINSULA WORKSURFACES - TX-WS21-XXXX

## 36" Deep with Hinged Grommet



| Item Code    | A | B  | C  |
|--------------|---|----|----|
| TX-WS21-3666 | 5 | 33 | 12 |
| TX-WS21-3672 | 5 | 36 | 12 |
| TX-WS21-3678 | 5 | 39 | 12 |

## 36" Deep with Pass-Through Grommet



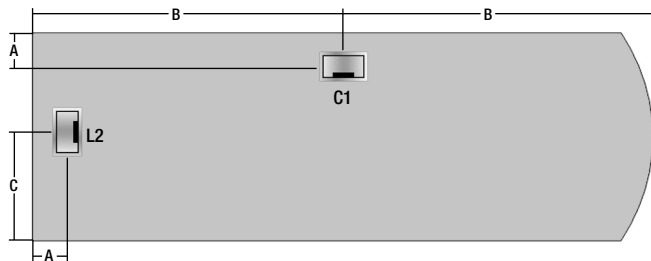
| Item Code    | A | B  | C  |
|--------------|---|----|----|
| TX-WS21-3666 | 4 | 33 | 18 |
| TX-WS21-3672 | 4 | 36 | 18 |
| TX-WS21-3678 | 4 | 39 | 18 |

### NOTES:

- C1 is not compatible with 2" thick hanging modesty panels (TX-2MOD). All other hanging modesty panels may only be used if placed flush to the approach edge of the worksurface.
- Pass Through Grommets are shown as rectangular steel grommet AC-GROM-35. Locations also apply to round black plastic grommet AC-GROM-1 and round steel grommet AC-GROM-6.

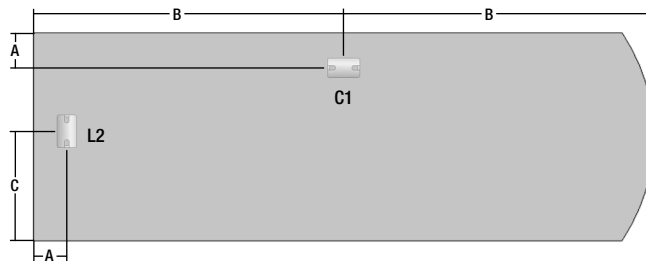
# BOW-END PENINSULA WORKSURFACES - TX-WS22-XXXX

## 24" Deep with Hinged Grommet



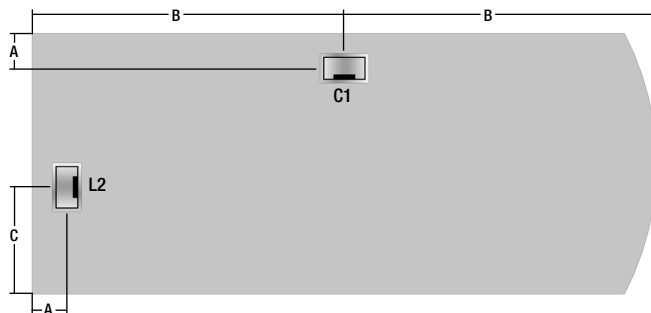
| Item Code    | A | B  | C  |
|--------------|---|----|----|
| TX-WS22-2448 | 5 | 24 | 12 |
| TX-WS22-2454 | 5 | 27 | 12 |
| TX-WS22-2460 | 5 | 30 | 12 |
| TX-WS22-2466 | 5 | 33 | 12 |
| TX-WS22-2472 | 5 | 36 | 12 |

## 24" Deep with Pass-Through Grommet



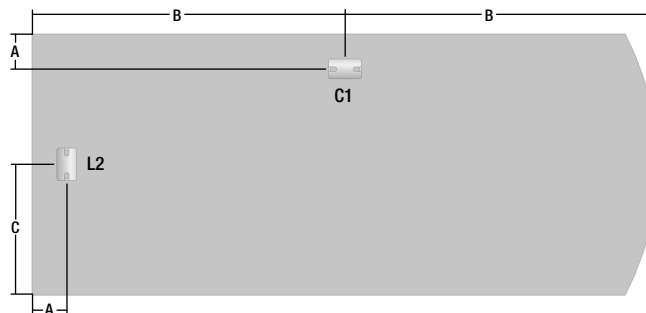
| Item Code    | A | B  | C  |
|--------------|---|----|----|
| TX-WS22-2448 | 4 | 24 | 12 |
| TX-WS22-2454 | 4 | 27 | 12 |
| TX-WS22-2460 | 4 | 30 | 12 |
| TX-WS22-2466 | 4 | 33 | 12 |
| TX-WS22-2472 | 4 | 36 | 12 |

## 30" Deep with Hinged Grommet



| Item Code    | A | B  | C  |
|--------------|---|----|----|
| TX-WS22-3048 | 5 | 24 | 12 |
| TX-WS22-3054 | 5 | 27 | 12 |
| TX-WS22-3060 | 5 | 30 | 12 |
| TX-WS22-3066 | 5 | 33 | 12 |
| TX-WS22-3072 | 5 | 36 | 12 |

## 30" Deep with Pass-Through Grommet



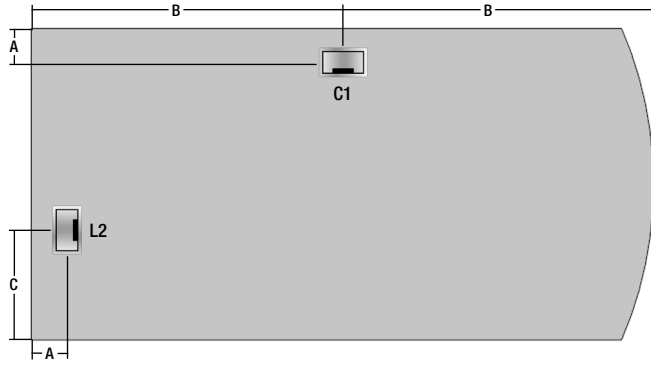
| Item Code    | A | B  | C  |
|--------------|---|----|----|
| TX-WS22-3048 | 4 | 24 | 15 |
| TX-WS22-3054 | 4 | 27 | 15 |
| TX-WS22-3060 | 4 | 30 | 15 |
| TX-WS22-3066 | 4 | 33 | 15 |
| TX-WS22-3072 | 4 | 36 | 15 |

### NOTES:

- C1 is not compatible with 2" thick hanging modesty panels (TX-2MOD). All other hanging modesty panels may only be used if placed flush to the approach edge of the worksurface.
- Pass Through Grommets are shown as rectangular steel grommet AC-GROM-35. Locations also apply to round black plastic grommet AC-GROM-1 and round steel grommet AC-GROM-6.

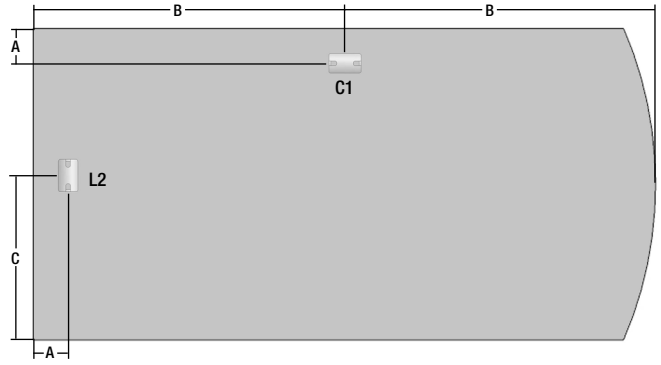
# BOW-END PENINSULA WORKSURFACES - TX-WS22-XXXX

## 36" Deep with Hinged Grommet



| Item Code    | A | B  | C  |
|--------------|---|----|----|
| TX-WS22-3666 | 5 | 33 | 12 |
| TX-WS22-3672 | 5 | 36 | 12 |
| TX-WS22-3678 | 5 | 39 | 12 |

## 36" Deep with Pass-Through Grommet

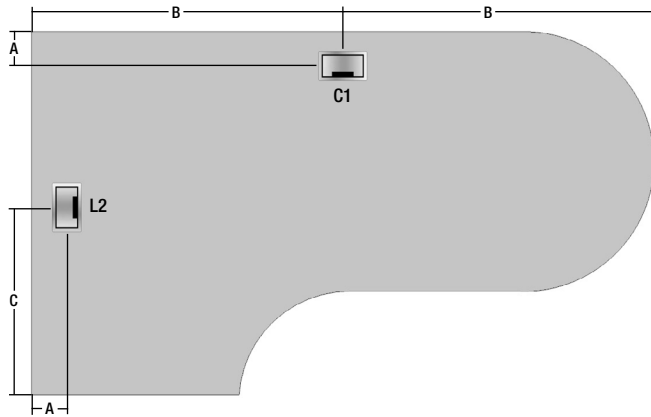


| Item Code    | A | B  | C  |
|--------------|---|----|----|
| TX-WS22-3666 | 4 | 33 | 18 |
| TX-WS22-3672 | 4 | 36 | 18 |
| TX-WS22-3678 | 4 | 39 | 18 |

### NOTES:

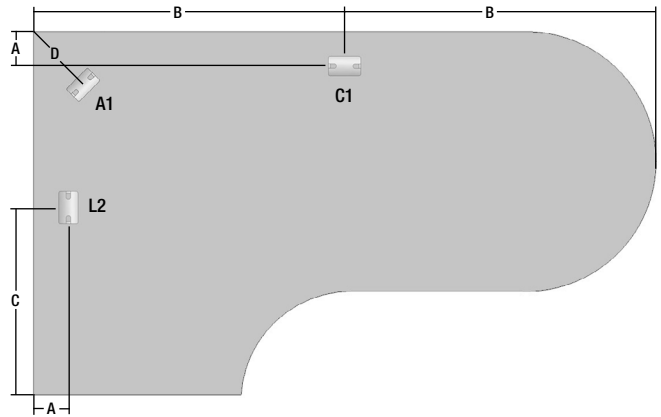
- C1 is not compatible with 2" thick hanging modesty panels (TX-2MOD). All other hanging modesty panels may only be used if placed flush to the approach edge of the worksurface.
- Pass Through Grommets are shown as rectangular steel grommet AC-GROM-35. Locations also apply to round black plastic grommet AC-GROM-1 and round steel grommet AC-GROM-6.

**42" Return Side with Hinged Grommet**



| Item Code    | A | B  | C  |
|--------------|---|----|----|
| TX-WS23-4266 | 5 | 33 | 21 |
| TX-WS23-4272 | 5 | 36 | 21 |
| TX-WS23-4278 | 5 | 39 | 21 |

**42" Return Side with Pass-Through Grommet**



| Item Code    | A | B  | C  | D  |
|--------------|---|----|----|----|
| TX-WS23-4266 | 4 | 33 | 21 | 15 |
| TX-WS23-4272 | 4 | 36 | 21 | 15 |
| TX-WS23-4278 | 4 | 39 | 21 | 15 |

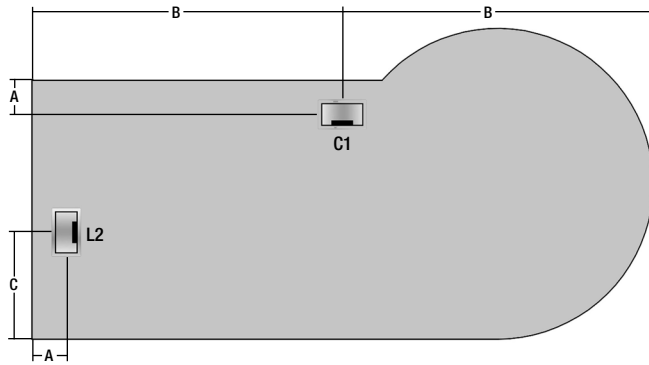
**NOTES:**

- C1 is not compatible with 2" thick hanging modesty panels (TX-2MOD). All other hanging modesty panels may only be used if placed flush to the approach edge of the worksurface.
- Pass Through Grommets are shown as rectangular steel grommet AC-GROM-35. Locations also apply to round black plastic grommet AC-GROM-1 and round steel grommet AC-GROM-6.



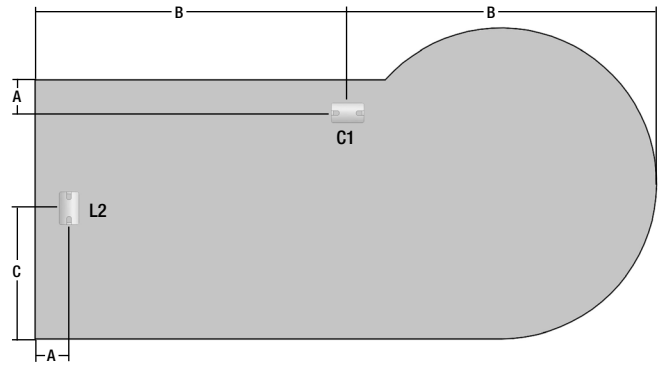
# P-TOP PENINSULA WORKSURFACES - TX-WS24-XXXX

## 30" Deep with Hinged Grommet



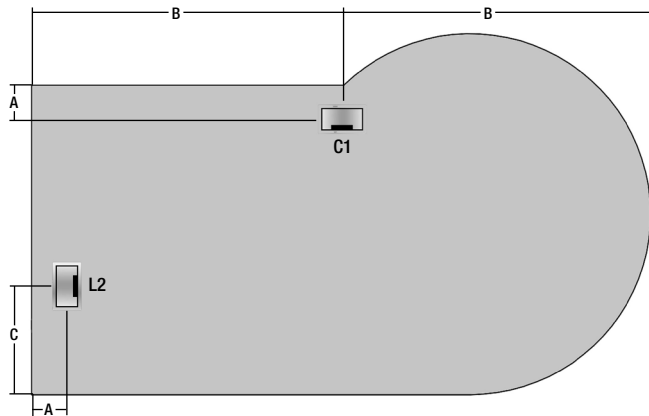
| Item Code    | A | B  | C  |
|--------------|---|----|----|
| TX-WS24-3060 | 5 | 30 | 12 |
| TX-WS24-3066 | 5 | 33 | 12 |
| TX-WS24-3072 | 5 | 36 | 12 |

## 30" Deep with Pass-Through Grommet



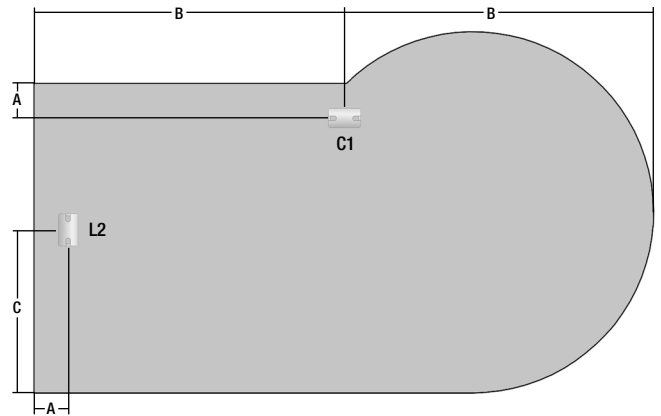
| Item Code    | A | B  | C  |
|--------------|---|----|----|
| TX-WS24-3060 | 4 | 30 | 15 |
| TX-WS24-3066 | 4 | 33 | 15 |
| TX-WS24-3072 | 4 | 36 | 15 |

## 36" Deep with Hinged Grommet



| Item Code    | A | B  | C  |
|--------------|---|----|----|
| TX-WS24-3672 | 5 | 36 | 12 |
| TX-WS24-3678 | 5 | 39 | 12 |

## 36" Deep with Pass-Through Grommet



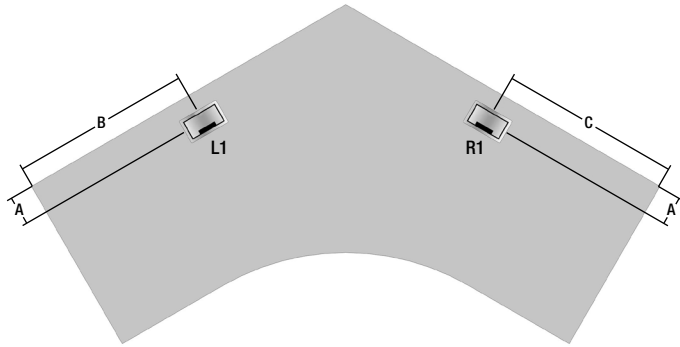
| Item Code    | A | B  | C  |
|--------------|---|----|----|
| TX-WS24-3672 | 4 | 36 | 18 |
| TX-WS24-3678 | 4 | 39 | 18 |

### NOTES:

- C1 is not compatible with 2" thick hanging modesty panels (TX-2MOD). All other hanging modesty panels may only be used if placed flush to the approach edge of the worksurface.
- Pass Through Grommets are shown as rectangular steel grommet AC-GROM-35. Locations also apply to round black plastic grommet AC-GROM-1 and round steel grommet AC-GROM-6.

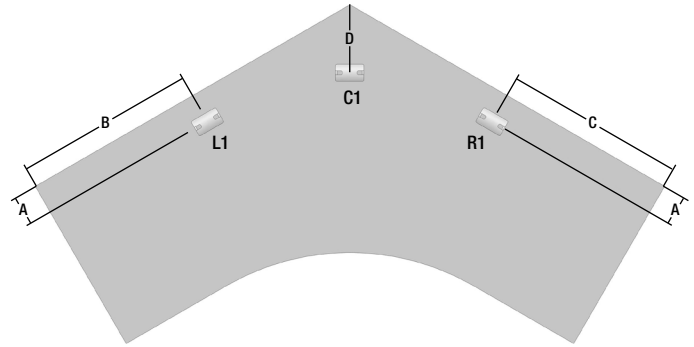
# 120 DEGREE CORNER WORKSURFACES - TX-WS45-XXXX

## 24" Deep with Hinged Grommet



| Item Code    | A | B  | C  |
|--------------|---|----|----|
| TX-WS45-4242 | 5 | 21 | 21 |
| TX-WS45-4848 | 5 | 24 | 24 |
| TX-WS45-5454 | 5 | 27 | 27 |

## 24" Deep with Pass-Through Grommet



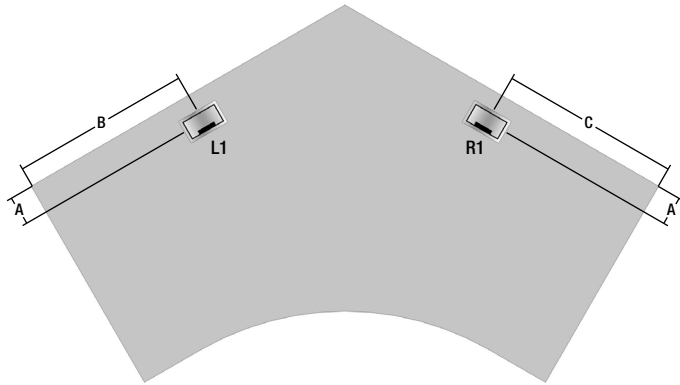
| Item Code    | A | B  | C  | D  |
|--------------|---|----|----|----|
| TX-WS45-4242 | 4 | 21 | 21 | 10 |
| TX-WS45-4848 | 4 | 24 | 24 | 10 |
| TX-WS45-5454 | 4 | 27 | 27 | 10 |

### NOTES:

- C1 is not compatible with 2" thick hanging modesty panels (TX-2MOD). All other hanging modesty panels may only be used if placed flush to the approach edge of the worksurface.
- Pass Through Grommets are shown as rectangular steel grommet AC-GROM-35. Locations also apply to round black plastic grommet AC-GROM-1 and round steel grommet AC-GROM-6.

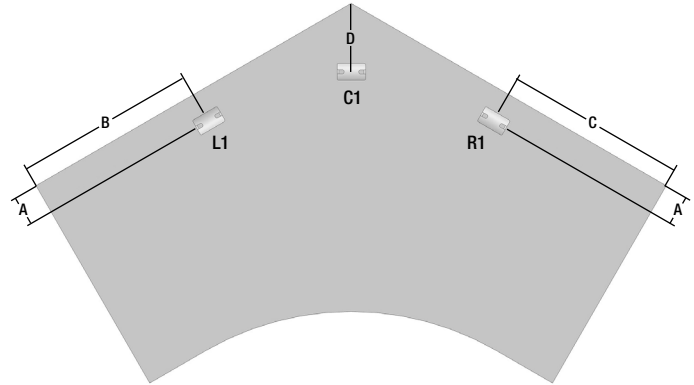
# 120 DEGREE CORNER WORKSURFACES - TX-WS46-XXXX

## 30" Deep with Hinged Grommet



| Item Code    | A | B  | C  |
|--------------|---|----|----|
| TX-WS46-4242 | 5 | 21 | 21 |
| TX-WS46-4848 | 5 | 24 | 24 |
| TX-WS46-5454 | 5 | 27 | 27 |

## 30" Deep with Pass-Through Grommet



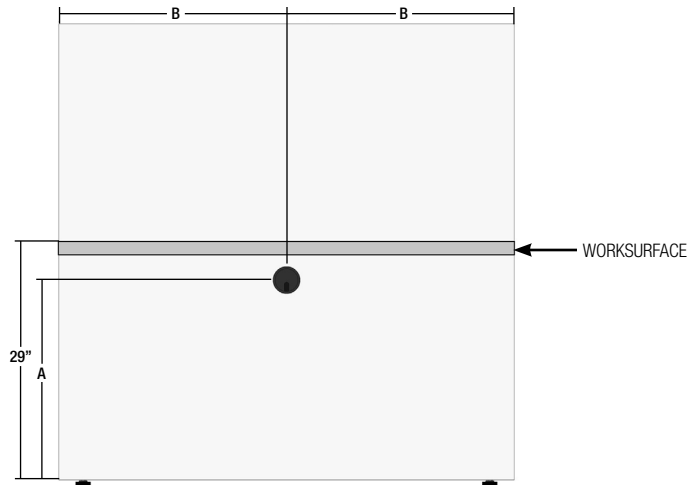
| Item Code    | A | B  | C  | D  |
|--------------|---|----|----|----|
| TX-WS46-4242 | 4 | 21 | 21 | 10 |
| TX-WS46-4848 | 4 | 24 | 24 | 10 |
| TX-WS46-5454 | 4 | 27 | 27 | 10 |

### NOTES:

- C1 is not compatible with 2" thick hanging modesty panels (TX-2MOD). All other hanging modesty panels may only be used if placed flush to the approach edge of the worksurface.
- Pass Through Grommets are shown as rectangular steel grommet AC-GROM-35. Locations also apply to round black plastic grommet AC-GROM-1 and round steel grommet AC-GROM-6.

# SPINE WALLS - TX-SPWX-XXXX

## All Sizes with Round Grommet



### 36" High Spine Walls - All Types

| Item Code    | A  | B    |
|--------------|----|------|
| TX-SPWX-2436 | 25 | 12   |
| TX-SPWX-3036 | 25 | 15   |
| TX-SPWX-3336 | 25 | 16.5 |
| TX-SPWX-3636 | 25 | 18   |
| TX-SPWX-3936 | 25 | 19.5 |
| TX-SPWX-4236 | 25 | 21   |
| TX-SPWX-4836 | 25 | 24   |
| TX-SPWX-5436 | 25 | 27   |
| TX-SPWX-6036 | 25 | 30   |

### 42" High Spine Walls - All Types

| Item Code    | A  | B    |
|--------------|----|------|
| TX-SPWX-2442 | 25 | 12   |
| TX-SPWX-3042 | 25 | 15   |
| TX-SPWX-3342 | 25 | 16.5 |
| TX-SPWX-3642 | 25 | 18   |
| TX-SPWX-3942 | 25 | 19.5 |
| TX-SPWX-4242 | 25 | 21   |
| TX-SPWX-4842 | 25 | 24   |
| TX-SPWX-5442 | 25 | 27   |
| TX-SPWX-6042 | 25 | 30   |

### 48" High Spine Walls - All Types

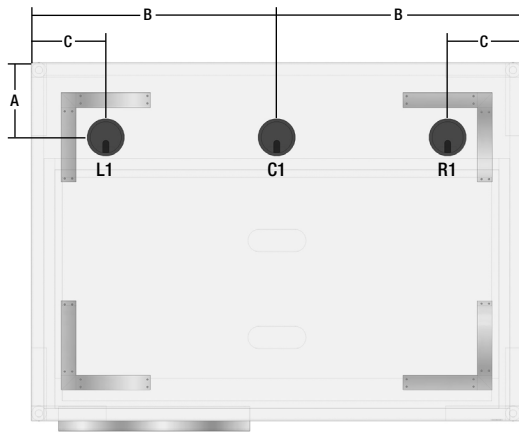
| Item Code    | A  | B    |
|--------------|----|------|
| TX-SPWX-2448 | 25 | 12   |
| TX-SPWX-3048 | 25 | 15   |
| TX-SPWX-3348 | 25 | 16.5 |
| TX-SPWX-3648 | 25 | 18   |
| TX-SPWX-3948 | 25 | 19.5 |
| TX-SPWX-4248 | 25 | 21   |
| TX-SPWX-4848 | 25 | 24   |
| TX-SPWX-5448 | 25 | 27   |
| TX-SPWX-6048 | 25 | 30   |

#### NOTES:

- Pass Through Grommets are shown as round black plastic grommet TX-OPT-GRO-1. Any other grommets are not available.

## CARGO HUBS- TX-HUBX-XXXX

### 24" Deep with Round Grommet



| Item Code    | A | B    | B |
|--------------|---|------|---|
| TX-HUBX-2417 | 5 | 8.5  | 5 |
| TX-SPWX-2425 | 5 | 12.5 | 5 |
| TX-SPWX-2433 | 5 | 16.5 | 5 |
| TX-SPWX-2449 | 5 | 24.5 | 5 |
| TX-SPWX-2465 | 5 | 32.5 | 5 |

### 30" Deep with Round Grommet

| Item Code    | A | B   | B |
|--------------|---|-----|---|
| TX-HUBX-3017 | 5 | 8.5 | 5 |

#### NOTES:

- Grommets are only available on 24" deep Cargo Hubs with 13" or 17" deep inserts. 30" deep Cargo Hubs may be specified with grommets and inserts.
- Pass Through Grommets are shown as round black plastic grommet TX-OPT-GRO-1. Locations also apply to round steel grommet TX-OPT-GRO-6. Any other grommets are not available.
- Please note: Cargo Hubs with Adjustable Glides do not have enough clearance to run power out of the bottom of the units.