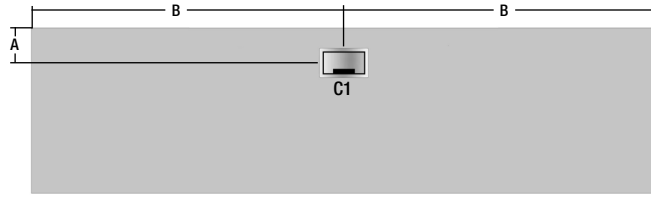


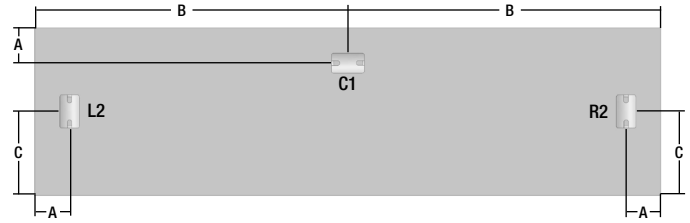
# RECTANGULAR WORKSURFACES - TX-WS01-XXXX

## 19" Deep with Hinged Grommet



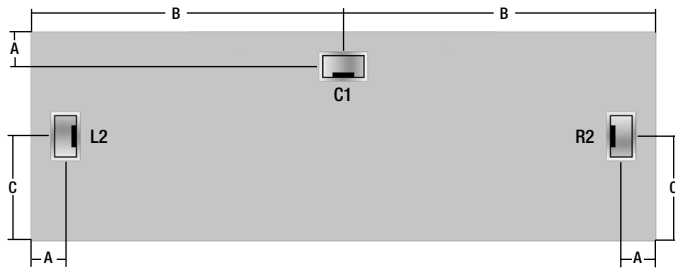
Item Code	A	B
TX-WS01-1912	NA	NA
TX-WS01-1918	NA	NA
TX-WS01-1924	5	12
TX-WS01-1930	5	15
TX-WS01-1936	5	18
TX-WS01-1942	5	21
TX-WS01-1948	5	24
TX-WS01-1954	5	27
TX-WS01-1960	5	30
TX-WS01-1966	5	33
TX-WS01-1972	5	36
TX-WS01-1978	5	39
TX-WS01-1984	5	42

## 19" Deep with Pass-Through Grommet



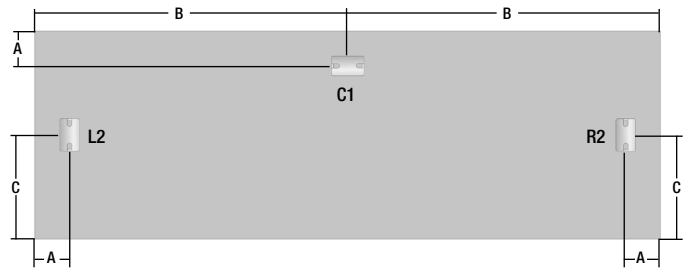
Item Code	A	B	C
TX-WS01-1912	NA	NA	NA
TX-WS01-1918	NA	NA	NA
TX-WS01-1924	4	12	9.5
TX-WS01-1930	4	15	9.5
TX-WS01-1936	4	18	9.5
TX-WS01-1942	4	21	9.5
TX-WS01-1948	4	24	9.5
TX-WS01-1954	4	27	9.5
TX-WS01-1960	4	30	9.5
TX-WS01-1966	4	33	9.5
TX-WS01-1972	4	36	9.5
TX-WS01-1978	4	39	9.5
TX-WS01-1984	4	42	9.5

## 24" Deep with Hinged Grommet



Item Code	A	B	C
TX-WS01-2412	NA	NA	NA
TX-WS01-2418	NA	NA	NA
TX-WS01-2424	5	12	12
TX-WS01-2430	5	15	12
TX-WS01-2436	5	18	12
TX-WS01-2442	5	21	12
TX-WS01-2448	5	24	12
TX-WS01-2454	5	27	12
TX-WS01-2460	5	30	12
TX-WS01-2466	5	33	12
TX-WS01-2472	5	36	12
TX-WS01-2478	5	39	12
TX-WS01-2484	5	42	12

## 24" Deep with Pass-Through Grommet



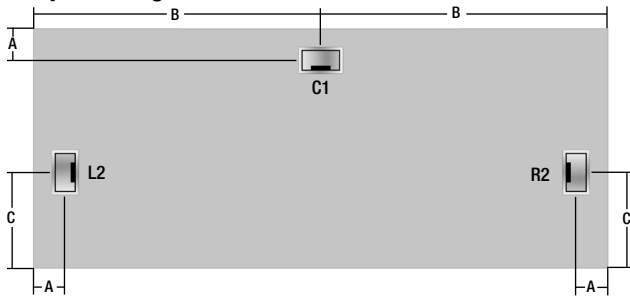
Item Code	A	B	C
TX-WS01-2412	NA	NA	NA
TX-WS01-2418	NA	NA	NA
TX-WS01-2424	4	12	12
TX-WS01-2430	4	15	12
TX-WS01-2436	4	18	12
TX-WS01-2442	4	21	12
TX-WS01-2448	4	24	12
TX-WS01-2454	4	27	12
TX-WS01-2460	4	30	12
TX-WS01-2466	4	33	12
TX-WS01-2472	4	36	12
TX-WS01-2478	4	39	12
TX-WS01-2484	4	42	12

### NOTES:

- C1 is not compatible with 2" thick hanging modesty panels (TX-2MOD). All other hanging modesty panels may only be used if placed flush to the approach edge of the worksurface.
- Pass Through Grommets are shown as rectangular steel grommet AC-GROM-35. Locations also apply to round black plastic grommet AC-GROM-1 and round steel grommet AC-GROM-6.

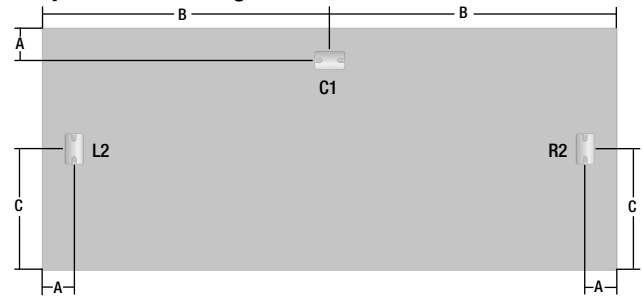
# RECTANGULAR WORKSURFACES - TX-WS01-XXXX

## 30" Deep with Hinged Grommet



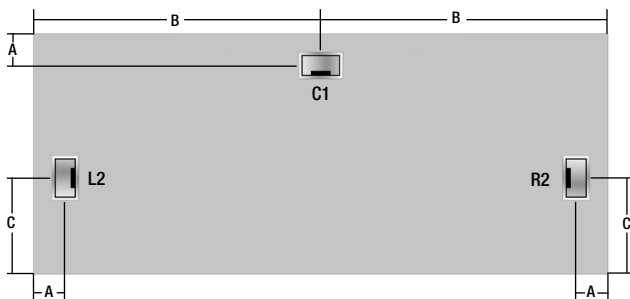
Item Code	A	B	C
TX-WS01-3012	NA	NA	NA
TX-WS01-3018	NA	NA	NA
TX-WS01-3024	5	12	12
TX-WS01-3030	5	15	12
TX-WS01-3036	5	18	12
TX-WS01-3042	5	21	12
TX-WS01-3048	5	24	12
TX-WS01-3054	5	27	12
TX-WS01-3060	5	30	12
TX-WS01-3066	5	33	12
TX-WS01-3072	5	36	12
TX-WS01-3078	5	39	12
TX-WS01-3084	5	42	12

## 30" Deep with Pass-Through Grommet



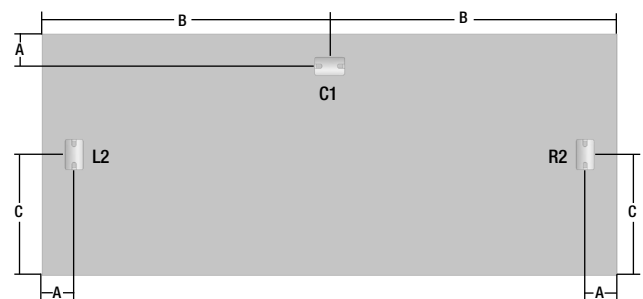
Item Code	A	B	C
TX-WS01-3012	NA	NA	NA
TX-WS01-3018	NA	NA	NA
TX-WS01-3024	4	12	15
TX-WS01-3030	4	15	15
TX-WS01-3036	4	18	15
TX-WS01-3042	4	21	15
TX-WS01-3048	4	24	15
TX-WS01-3054	4	27	15
TX-WS01-3060	4	30	15
TX-WS01-3066	4	33	15
TX-WS01-3072	4	36	15
TX-WS01-3078	4	39	15
TX-WS01-3084	4	42	15

## 36" Deep with Hinged Grommet



Item Code	A	B	C
TX-WS01-3612	NA	NA	NA
TX-WS01-3618	NA	NA	NA
TX-WS01-3624	5	12	12
TX-WS01-3630	5	15	12
TX-WS01-3636	5	18	12
TX-WS01-3642	5	21	12
TX-WS01-3648	5	24	12
TX-WS01-3654	5	27	12
TX-WS01-3660	5	30	12
TX-WS01-3666	5	33	12
TX-WS01-3672	5	36	12
TX-WS01-3678	5	39	12
TX-WS01-3684	5	42	12

## 36" Deep with Pass-Through Grommet



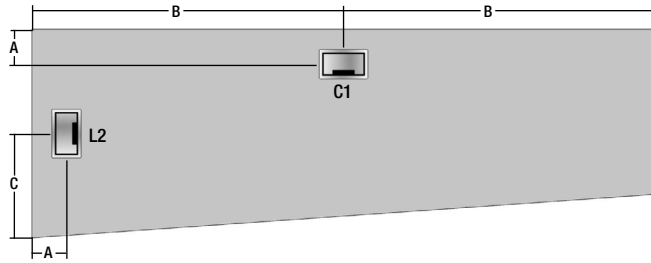
Item Code	A	B	C
TX-WS01-3612	NA	NA	NA
TX-WS01-3618	NA	NA	NA
TX-WS01-3624	4	12	18
TX-WS01-3630	4	15	18
TX-WS01-3636	4	18	18
TX-WS01-3642	4	21	18
TX-WS01-3648	4	24	18
TX-WS01-3654	4	27	18
TX-WS01-3660	4	30	18
TX-WS01-3666	4	33	18
TX-WS01-3672	4	36	18
TX-WS01-3678	4	39	18
TX-WS01-3684	4	42	18

### NOTES:

- C1 is not compatible with 2" thick hanging modesty panels (TX-2MOD). All other hanging modesty panels may only be used if placed flush to the approach edge of the worksurface.
- Pass Through Grommets are shown as rectangular steel grommet AC-GROM-35. Locations also apply to round black plastic grommet AC-GROM-1 and round steel grommet AC-GROM-6.

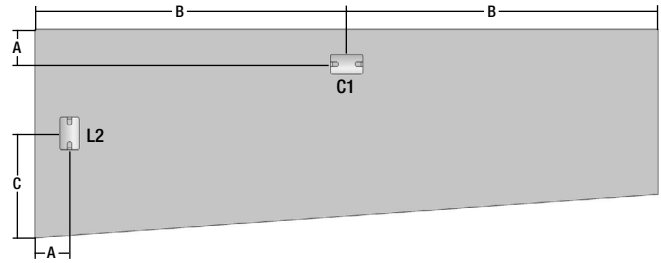
# WEDGE WORKSURFACES - TX-WS02-XXXX

## 24" Deep with Hinged Grommet



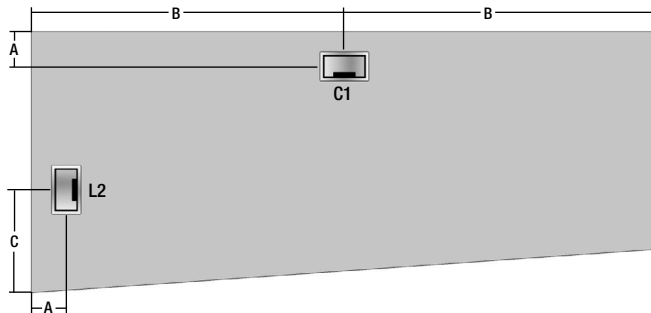
Item Code	A	B	C
TX-WS02-2460	5	30	12
TX-WS02-2466	5	33	12
TX-WS02-2472	5	36	12
TX-WS02-2478	5	39	12

## 24" Deep with Pass-Through Grommet



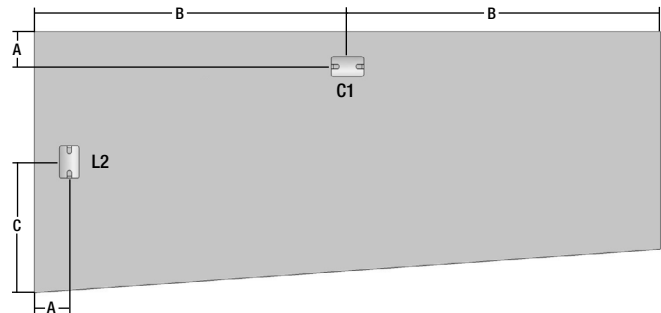
Item Code	A	B	C
TX-WS02-2460	4	30	12
TX-WS02-2466	4	33	12
TX-WS02-2472	4	36	12
TX-WS02-2478	4	39	12

## 30" Deep with Hinged Grommet



Item Code	A	B	C
TX-WS02-3060	5	30	12
TX-WS02-3066	5	33	12
TX-WS02-3072	5	36	12
TX-WS02-3078	5	39	12

## 30" Deep with Pass-Through Grommet

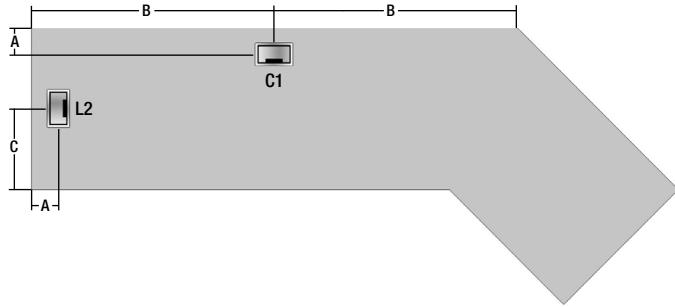


Item Code	A	B	C
TX-WS02-3060	4	30	15
TX-WS02-3066	4	33	15
TX-WS02-3072	4	36	15
TX-WS02-3078	4	39	15

### NOTES:

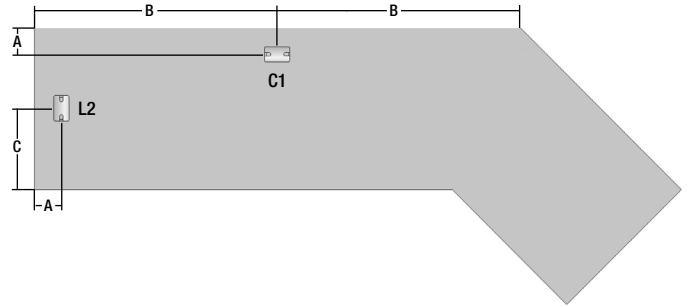
- C1 is not compatible with 2" thick hanging modesty panels (TX-2MOD). All other hanging modesty panels may only be used if placed flush to the approach edge of the worksurface.
- Pass Through Grommets are shown as rectangular steel grommet AC-GROM-35. Locations also apply to round black plastic grommet AC-GROM-1 and round steel grommet AC-GROM-6.

**24" Deep with Hinged Grommet**



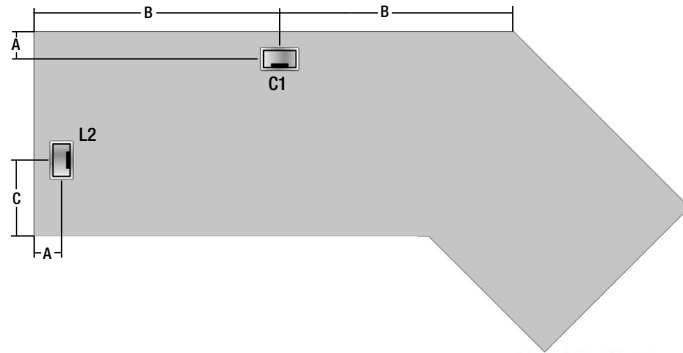
Item Code	A	B	C
TX-WS03-2484	5	30	12
TX-WS03-2490	5	33	12
TX-WS03-2496	5	36	12

**24" Deep with Pass-Through Grommet**



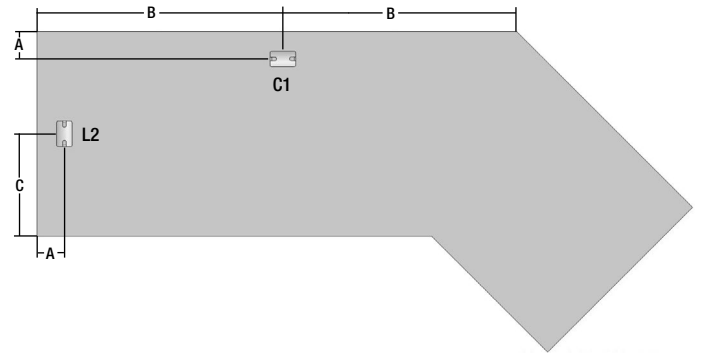
Item Code	A	B	C
TX-WS03-2484	4	30	12
TX-WS03-2490	4	33	12
TX-WS03-2496	4	36	12

**30" Deep with Hinged Grommet**



Item Code	A	B	C
TX-WS03-3084	5	30	12
TX-WS03-3090	5	33	12
TX-WS03-3096	5	36	12

**30" Deep with Pass-Through Grommet**



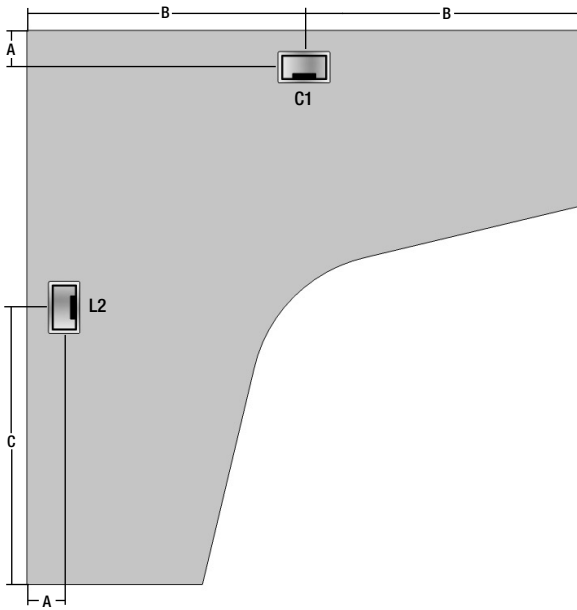
Item Code	A	B	C
TX-WS03-3084	4	30	15
TX-WS03-3090	4	33	15
TX-WS03-3096	4	36	15

**NOTES:**

- C1 is not compatible with 2" thick hanging modesty panels (TX-2MOD). All other hanging modesty panels may only be used if placed flush to the approach edge of the worksurface.
- Pass Through Grommets are shown as rectangular steel grommet AC-GROM-35. Locations also apply to round black plastic grommet AC-GROM-1 and round steel grommet AC-GROM-6.

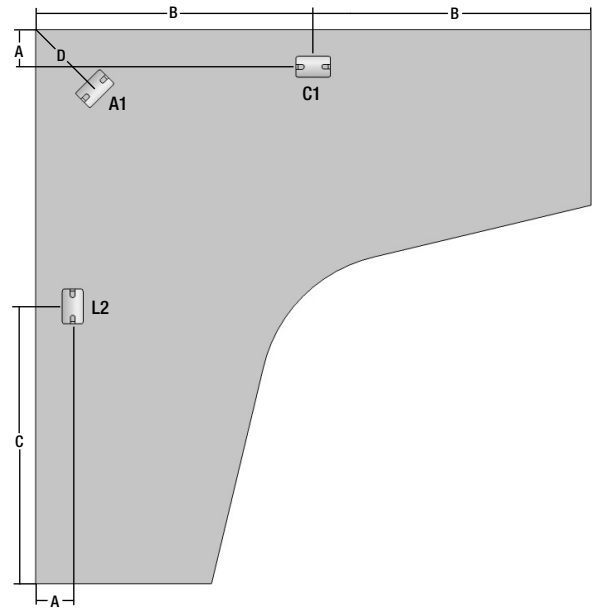
# TAPERING BOOMERANG WORKSURFACES (SYMMETRICAL)- TX-WS05-XXXX

## 19" Deep with Hinged Grommet



Item Code	A	B	C
TX-WS05-4848	5	24	24
TX-WS05-5454	5	27	27
TX-WS05-6060	5	30	30

## 19" Deep with Pass-Through Grommet



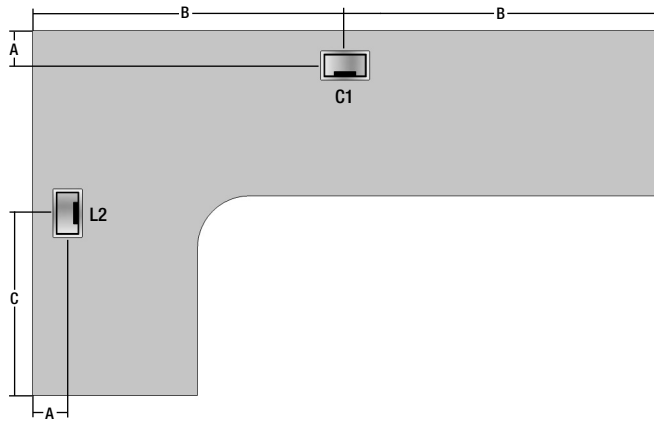
Item Code	A	B	C	D
TX-WS05-4848	4	24	24	15
TX-WS05-5454	4	27	27	15
TX-WS05-6060	4	30	30	15

### NOTES:

- C1 is not compatible with 2" thick hanging modesty panels (TX-2MOD). All other hanging modesty panels may only be used if placed flush to the approach edge of the worksurface.
- Pass Through Grommets are shown as rectangular steel grommet AC-GROM-35. Locations also apply to round black plastic grommet AC-GROM-1 and round steel grommet AC-GROM-6.

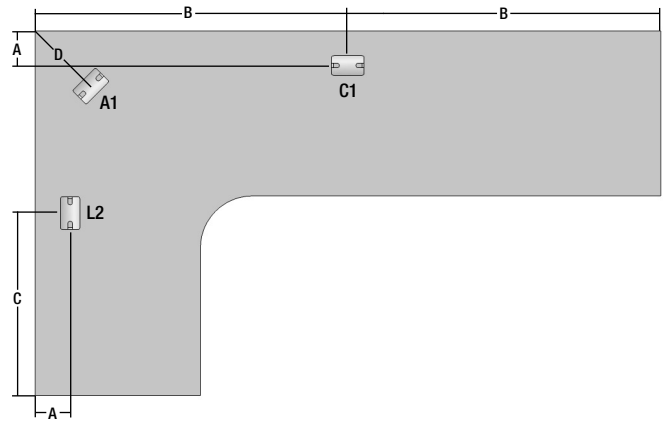
# EXTENDED COMPUTER CORNER WORKSURFACES - TX-WS06-XXXX

## 42" Return Side, 19/19" Deep with Hinged Grommet



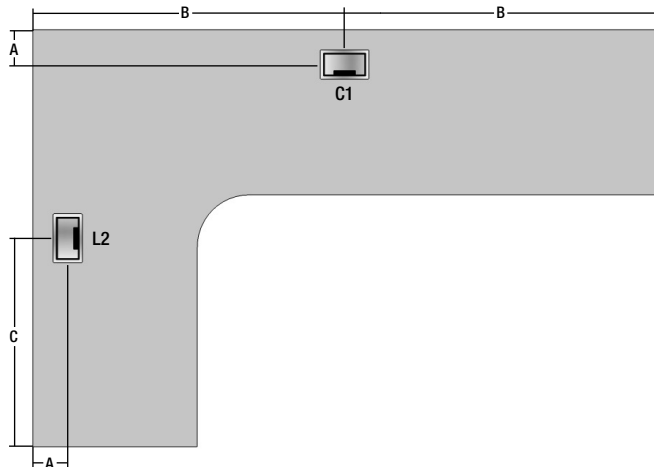
Item Code	A	B	C
TX-WS06-4266	5	33	21
TX-WS06-4272	5	36	21
TX-WS06-4278	5	39	21

## 42" Return Side, 19/19" Deep with Pass-Through Grommet



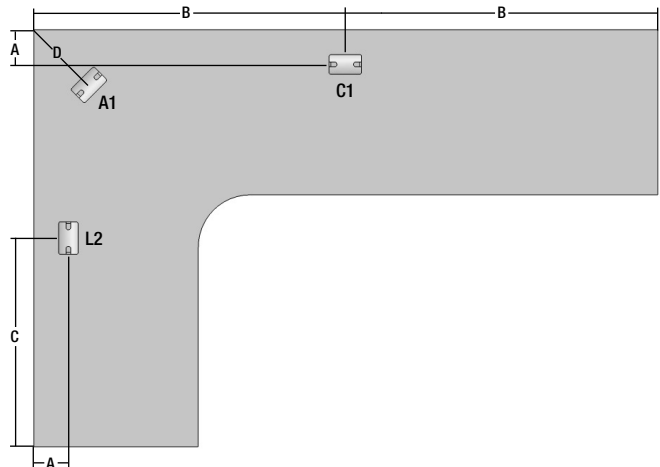
Item Code	A	B	C	D
TX-WS06-4266	4	33	21	15
TX-WS06-4272	4	36	21	15
TX-WS06-4278	4	39	21	15

## 48" Return Side, 19/19" Deep with Hinged Grommet



Item Code	A	B	C
TX-WS06-4866	5	30	24
TX-WS06-4872	5	33	24
TX-WS06-4878	5	36	24

## 48" Return Side, 19/19" Deep with Pass-Through Grommet



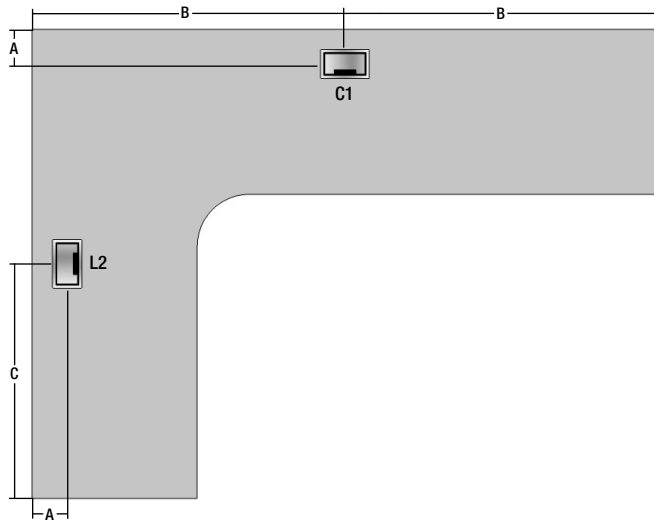
Item Code	A	B	C	D
TX-WS06-4866	4	30	24	15
TX-WS06-4872	4	33	24	15
TX-WS06-4878	4	36	24	15

### NOTES:

- C1 is not compatible with 2" thick hanging modesty panels (TX-2MOD). All other hanging modesty panels may only be used if placed flush to the approach edge of the worksurface.
- Pass Through Grommets are shown as rectangular steel grommet AC-GROM-35. Locations also apply to round black plastic grommet AC-GROM-1 and round steel grommet AC-GROM-6.

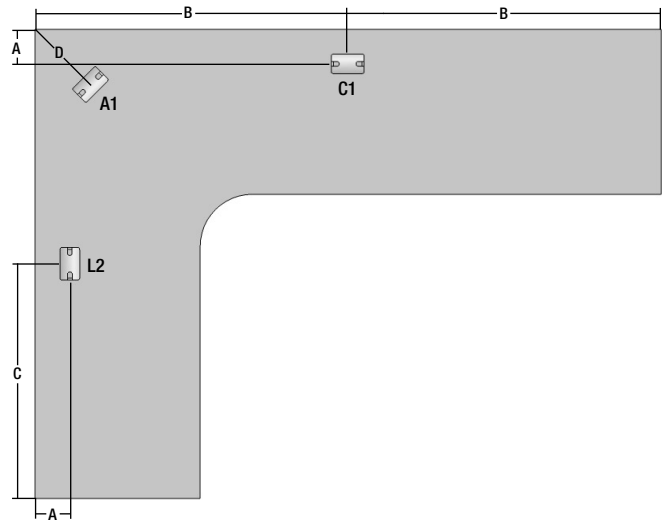
# EXTENDED COMPUTER CORNER WORKSURFACES - TX-WS06-XXXX

## 54" Return Side, 19/19" Deep with Hinged Grommet



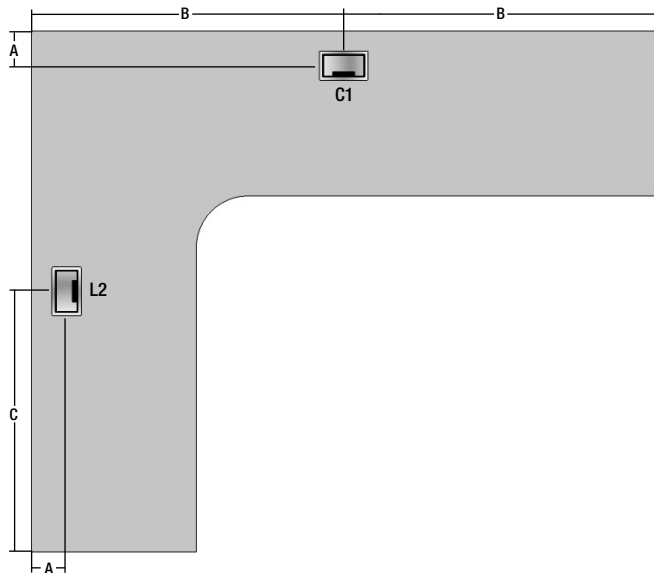
Item Code	A	B	C
TX-WS06-5466	5	30	27
TX-WS06-5472	5	33	27
TX-WS06-5478	5	36	27

## 54" Return Side, 19/19" Deep with Pass-Through Grommet



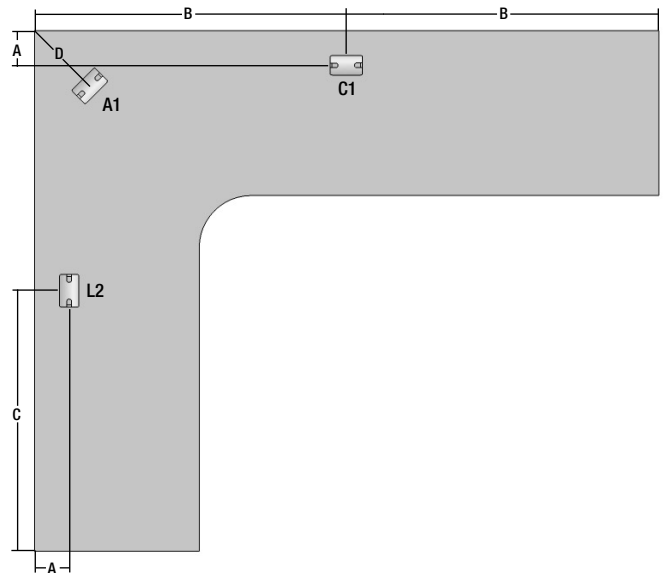
Item Code	A	B	C	D
TX-WS06-5466	4	30	27	15
TX-WS06-5472	4	33	27	15
TX-WS06-5478	4	36	27	15

## 60" Return Side, 19/19" Deep with Hinged Grommet



Item Code	A	B	C
TX-WS06-6066	5	30	30
TX-WS06-6072	5	33	30
TX-WS06-6078	5	36	30

## 60" Return Side, 19/19" Deep with Pass-Through Grommet



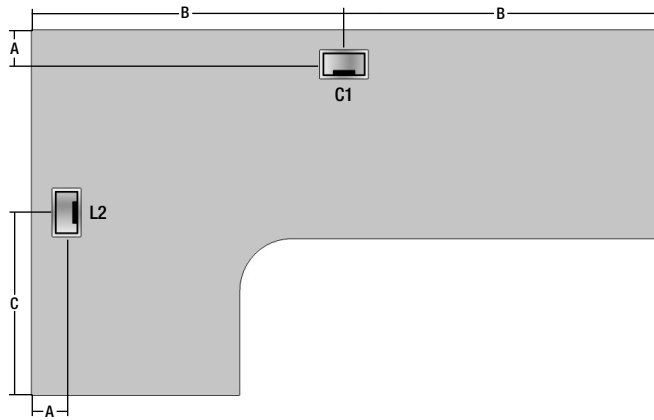
Item Code	A	B	C	D
TX-WS06-6066	4	30	30	15
TX-WS06-6072	4	33	30	15
TX-WS06-6078	4	36	30	15

### NOTES:

- C1 is not compatible with 2" thick hanging modesty panels (TX-2MOD). All other hanging modesty panels may only be used if placed flush to the approach edge of the worksurface.
- Pass Through Grommets are shown as rectangular steel grommet AC-GROM-35. Locations also apply to round black plastic grommet AC-GROM-1 and round steel grommet AC-GROM-6.

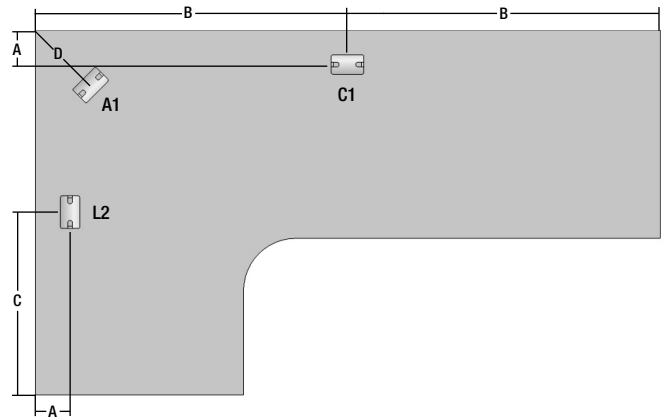
# EXTENDED COMPUTER CORNER WORKSURFACES - TX-WS07-XXXX

## 42" Return Side, 24/24" Deep with Hinged Grommet



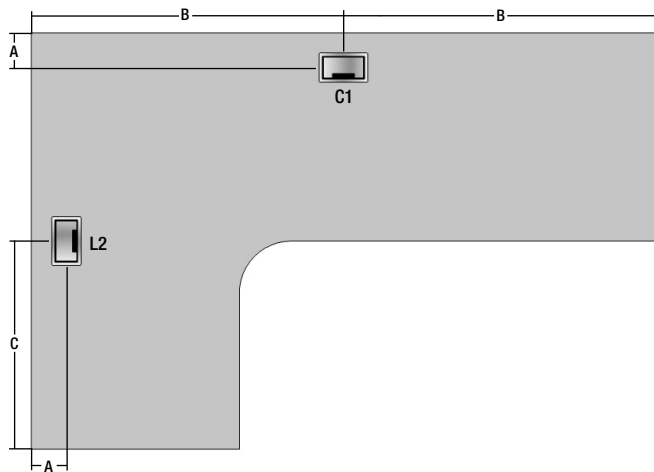
Item Code	A	B	C
TX-WS07-4266	5	33	21
TX-WS07-4272	5	36	21
TX-WS07-4278	5	39	21

## 42" Return Side, 24/24" Deep with Pass-Through Grommet



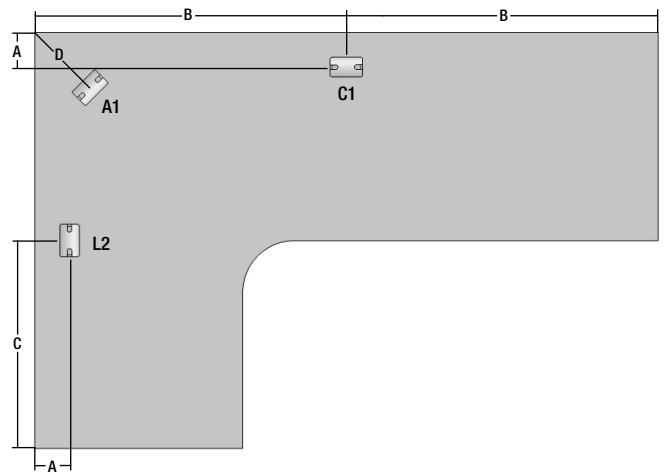
Item Code	A	B	C	D
TX-WS07-4266	4	33	21	15
TX-WS07-4272	4	36	21	15
TX-WS07-4278	4	39	21	15

## 48" Return Side, 24/24" Deep with Hinged Grommet



Item Code	A	B	C
TX-WS07-4866	5	30	24
TX-WS07-4872	5	33	24
TX-WS07-4878	5	36	24

## 48" Return Side, 24/24" Deep with Pass-Through Grommet



Item Code	A	B	C	D
TX-WS07-4866	4	30	24	15
TX-WS07-4872	4	33	24	15
TX-WS07-4878	4	36	24	15

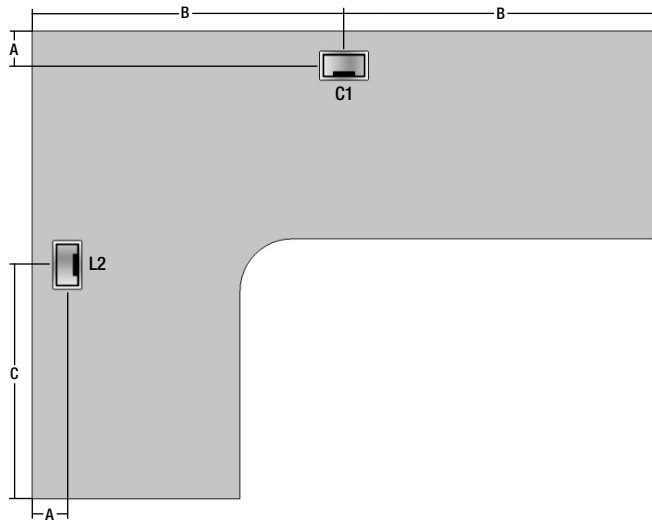
### NOTES:

- C1 is not compatible with 2" thick hanging modesty panels (TX-2MOD). All other hanging modesty panels may only be used if placed flush to the approach edge of the worksurface.
- Pass Through Grommets are shown as rectangular steel grommet AC-GROM-35. Locations also apply to round black plastic grommet AC-GROM-1 and round steel grommet AC-GROM-6.



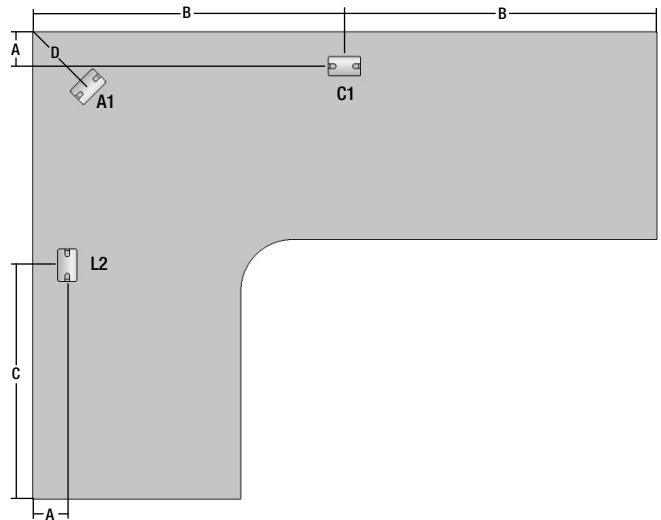
# EXTENDED COMPUTER CORNER WORKSURFACES - TX-WS07-XXXX

## 54" Return Side, 24/24" Deep with Hinged Grommet



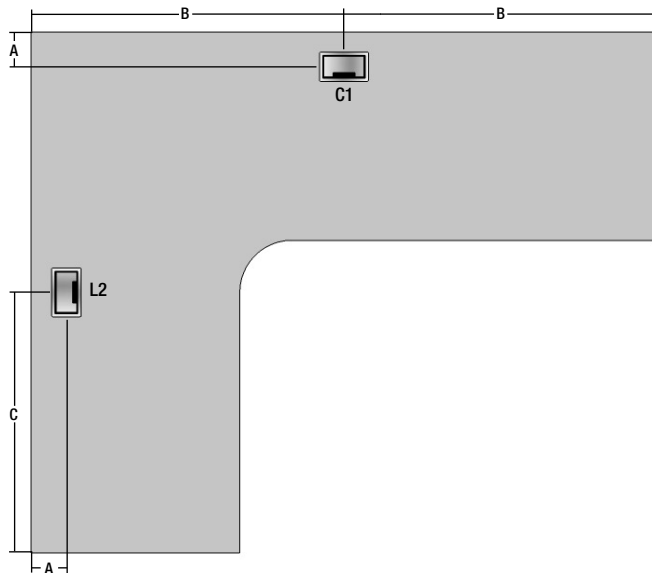
Item Code	A	B	C
TX-WS07-5466	5	30	27
TX-WS07-5472	5	33	27
TX-WS07-5478	5	36	27

## 54" Return Side, 24/24" Deep with Pass-Through Grommet



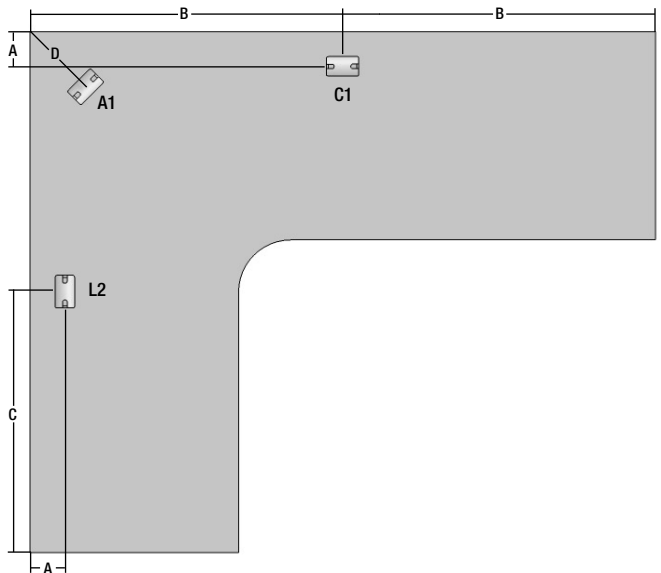
Item Code	A	B	C	D
TX-WS07-5466	4	30	27	15
TX-WS07-5472	4	33	27	15
TX-WS07-5478	4	36	27	15

## 60" Return Side, 24/24" Deep with Hinged Grommet



Item Code	A	B	C
TX-WS07-6066	5	30	30
TX-WS07-6072	5	33	30
TX-WS07-6078	5	36	30

## 60" Return Side, 24/24" Deep with Pass-Through Grommet



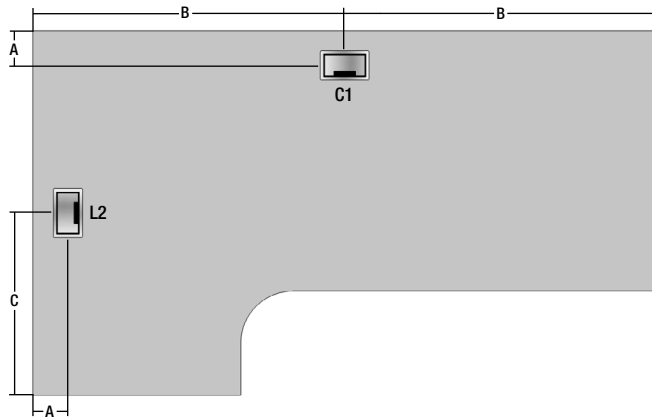
Item Code	A	B	C	D
TX-WS07-6066	4	30	30	15
TX-WS07-6072	4	33	30	15
TX-WS07-6078	4	36	30	15

### NOTES:

- C1 is not compatible with 2" thick hanging modesty panels (TX-2MOD). All other hanging modesty panels may only be used if placed flush to the approach edge of the worksurface.
- Pass Through Grommets are shown as rectangular steel grommet AC-GROM-35. Locations also apply to round black plastic grommet AC-GROM-1 and round steel grommet AC-GROM-6.

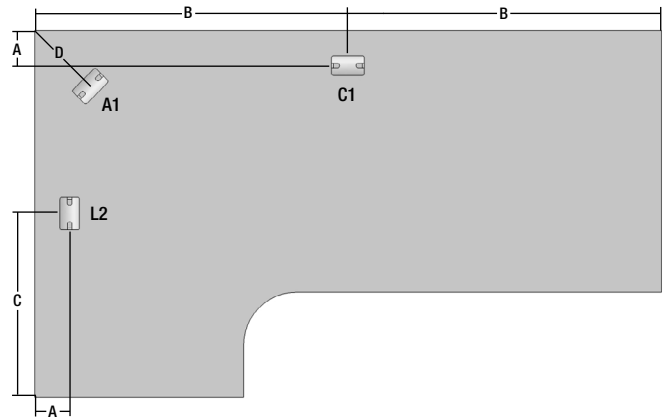
# EXTENDED COMPUTER CORNER WORKSURFACES - TX-WS08-XXXX

## 42" Return Side, 24/30" Deep with Hinged Grommet



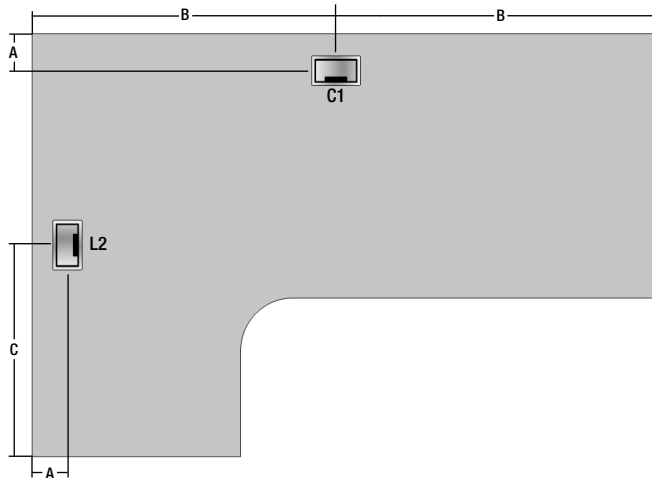
Item Code	A	B	C
TX-WS08-4266	5	33	21
TX-WS08-4272	5	36	21
TX-WS08-4278	5	39	21

## 42" Return Side, 24/30" Deep with Pass-Through Grommet



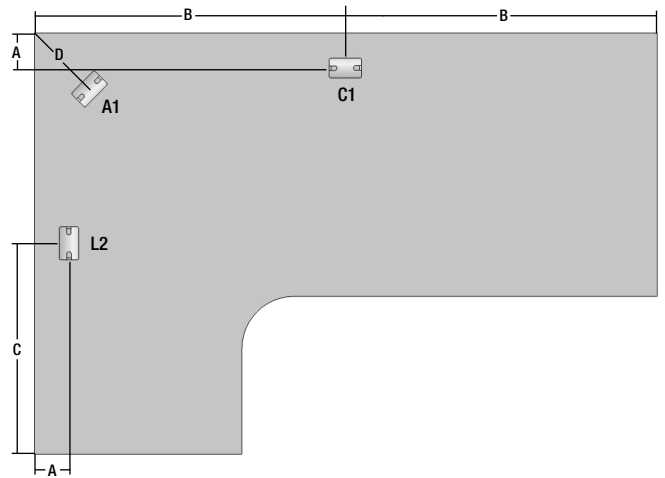
Item Code	A	B	C	D
TX-WS08-4266	4	33	21	15
TX-WS08-4272	4	36	21	15
TX-WS08-4278	4	39	21	15

## 48" Return Side, 24/30" Deep with Hinged Grommet



Item Code	A	B	C
TX-WS08-4866	5	30	24
TX-WS08-4872	5	33	24
TX-WS08-4878	5	36	24

## 48" Return Side, 24/30" Deep with Pass-Through Grommet



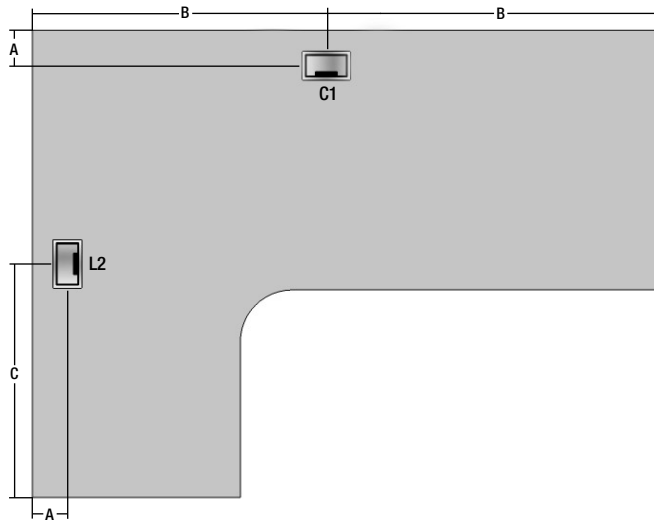
Item Code	A	B	C	D
TX-WS08-4866	4	30	24	15
TX-WS08-4872	4	33	24	15
TX-WS08-4878	4	36	24	15

### NOTES:

- C1 is not compatible with 2" thick hanging modesty panels (TX-2MOD). All other hanging modesty panels may only be used if placed flush to the approach edge of the worksurface.
- Pass Through Grommets are shown as rectangular steel grommet AC-GROM-35. Locations also apply to round black plastic grommet AC-GROM-1 and round steel grommet AC-GROM-6.

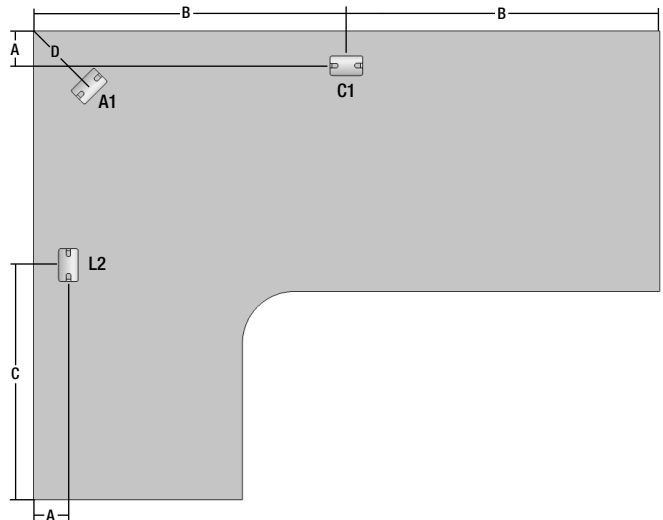
# EXTENDED COMPUTER CORNER WORKSURFACES - TX-WS08-XXXX

## 54" Return Side, 24/30" Deep with Hinged Grommet



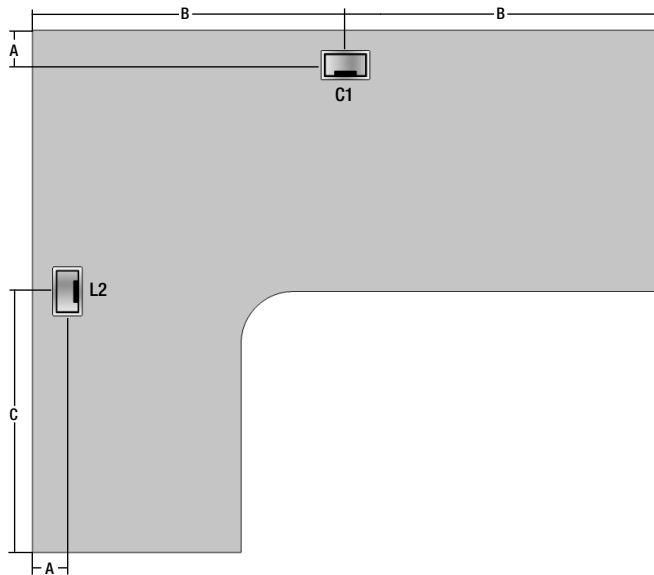
Item Code	A	B	C
TX-WS08-5466	5	30	27
TX-WS08-5472	5	33	27
TX-WS08-5478	5	36	27

## 54" Return Side, 24/30" Deep with Pass-Through Grommet



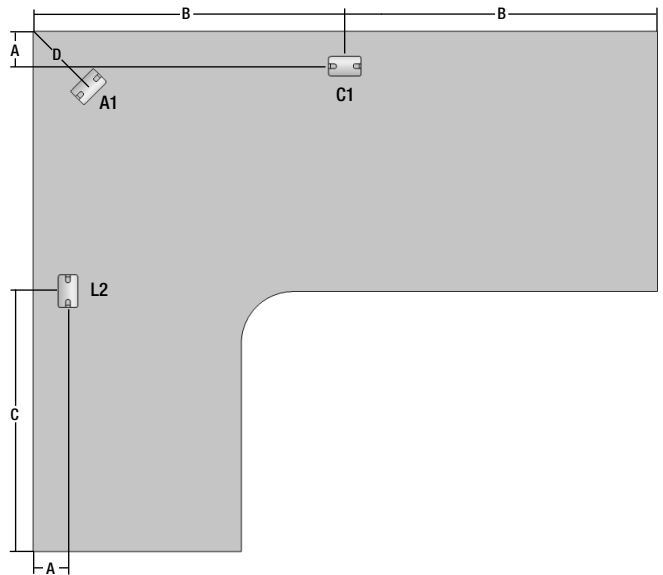
Item Code	A	B	C	D
TX-WS08-5466	4	30	27	15
TX-WS08-5472	4	33	27	15
TX-WS08-5478	4	36	27	15

## 60" Return Side, 24/30" Deep with Hinged Grommet



Item Code	A	B	C
TX-WS08-6066	5	30	30
TX-WS08-6072	5	33	30
TX-WS08-6078	5	36	30

## 60" Return Side, 24/30" Deep with Pass-Through Grommet



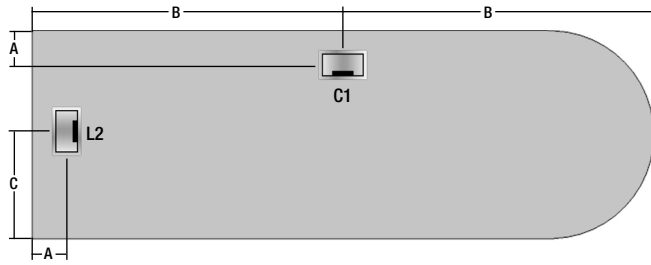
Item Code	A	B	C	D
TX-WS08-6066	4	30	30	15
TX-WS08-6072	4	33	30	15
TX-WS08-6078	4	36	30	15

### NOTES:

- C1 is not compatible with 2" thick hanging modesty panels (TX-2MOD). All other hanging modesty panels may only be used if placed flush to the approach edge of the worksurface.
- Pass Through Grommets are shown as rectangular steel grommet AC-GROM-35. Locations also apply to round black plastic grommet AC-GROM-1 and round steel grommet AC-GROM-6.

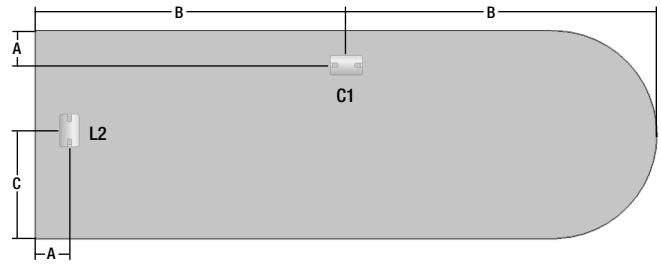
# BULLET PENINSULA WORKSURFACES - TX-WS21-XXXX

## 24" Deep with Hinged Grommet



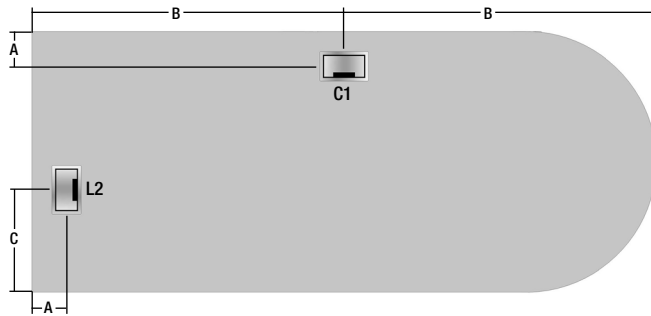
Item Code	A	B	C
TX-WS21-2448	5	24	12
TX-WS21-2454	5	27	12
TX-WS21-2460	5	30	12
TX-WS21-2466	5	33	12
TX-WS21-2472	5	36	12

## 24" Deep with Pass-Through Grommet



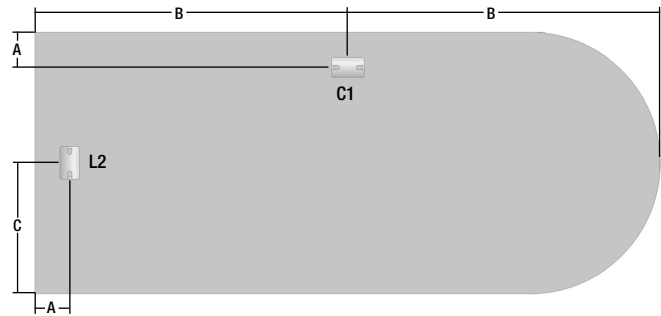
Item Code	A	B	C
TX-WS21-2448	4	24	12
TX-WS21-2454	4	27	12
TX-WS21-2460	4	30	12
TX-WS21-2466	4	33	12
TX-WS21-2472	4	36	12

## 30" Deep with Hinged Grommet



Item Code	A	B	C
TX-WS21-3048	5	24	12
TX-WS21-3054	5	27	12
TX-WS21-3060	5	30	12
TX-WS21-3066	5	33	12
TX-WS21-3072	5	36	12

## 30" Deep with Pass-Through Grommet



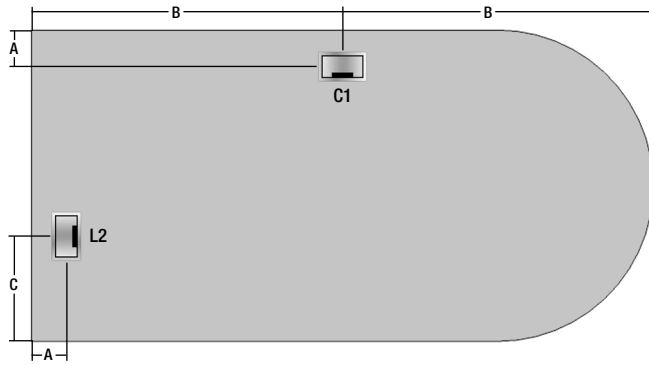
Item Code	A	B	C
TX-WS21-3048	4	24	15
TX-WS21-3054	4	27	15
TX-WS21-3060	4	30	15
TX-WS21-3066	4	33	15
TX-WS21-3072	4	36	15

### NOTES:

- C1 is not compatible with 2" thick hanging modesty panels (TX-2MOD). All other hanging modesty panels may only be used if placed flush to the approach edge of the worksurface.
- Pass Through Grommets are shown as rectangular steel grommet AC-GROM-35. Locations also apply to round black plastic grommet AC-GROM-1 and round steel grommet AC-GROM-6.

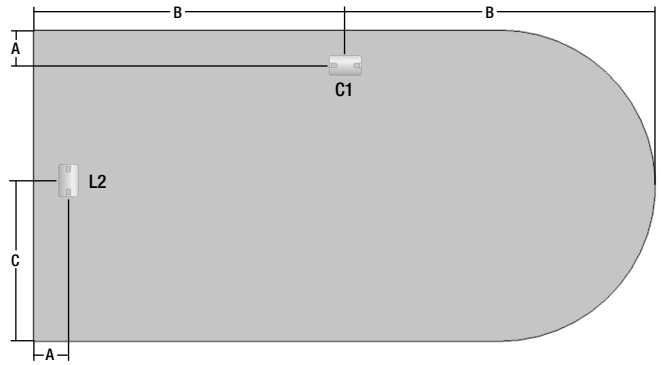
# BULLET PENINSULA WORKSURFACES - TX-WS21-XXXX

## 36" Deep with Hinged Grommet



Item Code	A	B	C
TX-WS21-3666	5	33	12
TX-WS21-3672	5	36	12
TX-WS21-3678	5	39	12

## 36" Deep with Pass-Through Grommet



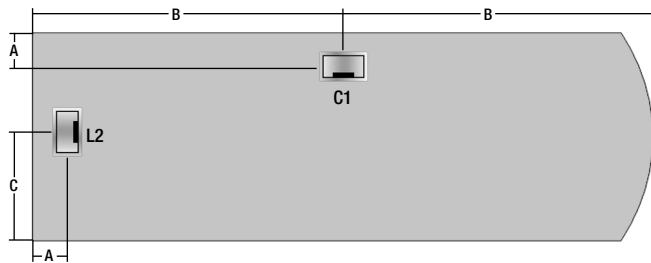
Item Code	A	B	C
TX-WS21-3666	4	33	18
TX-WS21-3672	4	36	18
TX-WS21-3678	4	39	18

### NOTES:

- C1 is not compatible with 2" thick hanging modesty panels (TX-2MOD). All other hanging modesty panels may only be used if placed flush to the approach edge of the worksurface.
- Pass Through Grommets are shown as rectangular steel grommet AC-GROM-35. Locations also apply to round black plastic grommet AC-GROM-1 and round steel grommet AC-GROM-6.

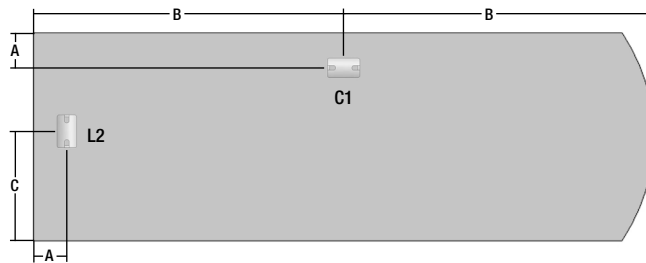
# BOW-END PENINSULA WORKSURFACES - TX-WS22-XXXX

## 24" Deep with Hinged Grommet



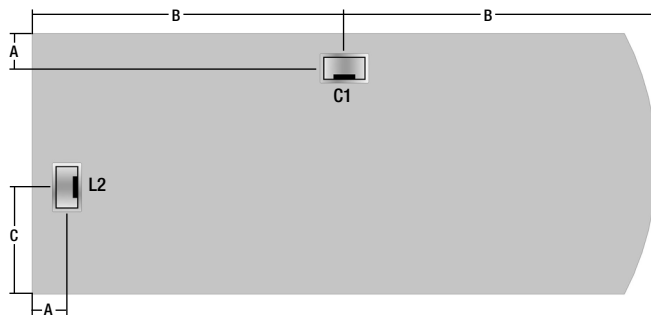
Item Code	A	B	C
TX-WS22-2448	5	24	12
TX-WS22-2454	5	27	12
TX-WS22-2460	5	30	12
TX-WS22-2466	5	33	12
TX-WS22-2472	5	36	12

## 24" Deep with Pass-Through Grommet



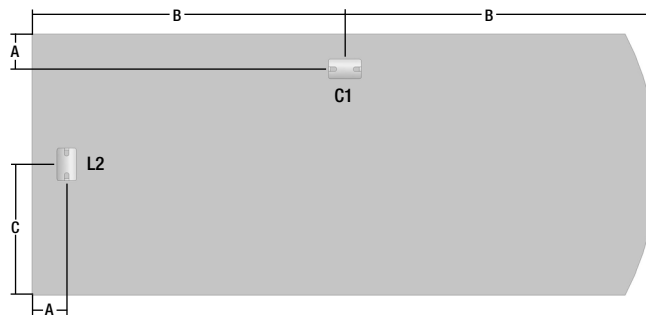
Item Code	A	B	C
TX-WS22-2448	4	24	12
TX-WS22-2454	4	27	12
TX-WS22-2460	4	30	12
TX-WS22-2466	4	33	12
TX-WS22-2472	4	36	12

## 30" Deep with Hinged Grommet



Item Code	A	B	C
TX-WS22-3048	5	24	12
TX-WS22-3054	5	27	12
TX-WS22-3060	5	30	12
TX-WS22-3066	5	33	12
TX-WS22-3072	5	36	12

## 30" Deep with Pass-Through Grommet



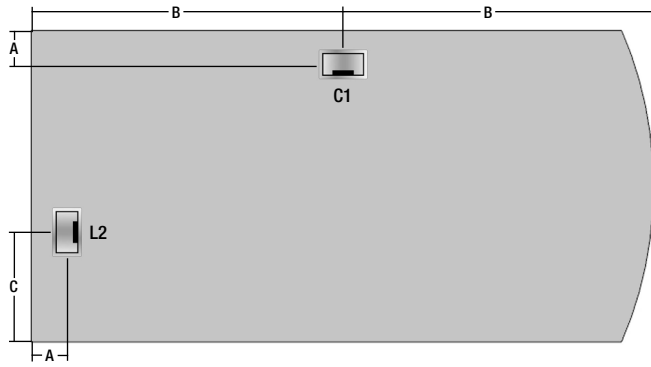
Item Code	A	B	C
TX-WS22-3048	4	24	15
TX-WS22-3054	4	27	15
TX-WS22-3060	4	30	15
TX-WS22-3066	4	33	15
TX-WS22-3072	4	36	15

### NOTES:

- C1 is not compatible with 2" thick hanging modesty panels (TX-2MOD). All other hanging modesty panels may only be used if placed flush to the approach edge of the worksurface.
- Pass Through Grommets are shown as rectangular steel grommet AC-GROM-35. Locations also apply to round black plastic grommet AC-GROM-1 and round steel grommet AC-GROM-6.

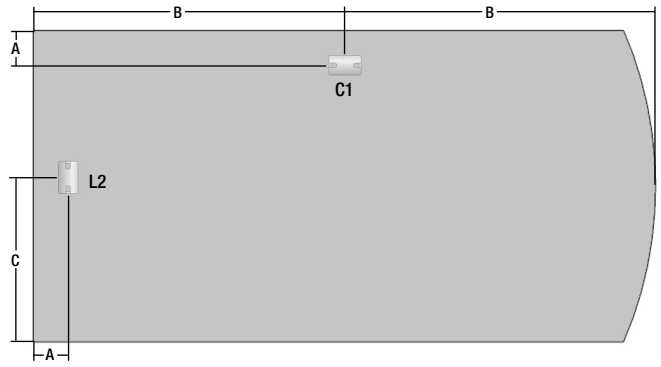
# BOW-END PENINSULA WORKSURFACES - TX-WS22-XXXX

## 36" Deep with Hinged Grommet



Item Code	A	B	C
TX-WS22-3666	5	33	12
TX-WS22-3672	5	36	12
TX-WS22-3678	5	39	12

## 36" Deep with Pass-Through Grommet

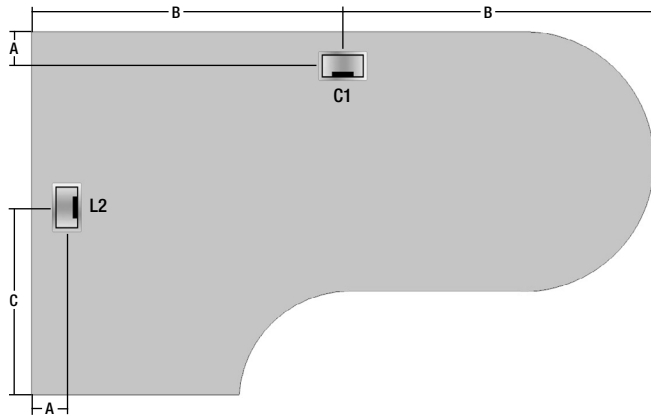


Item Code	A	B	C
TX-WS22-3666	4	33	18
TX-WS22-3672	4	36	18
TX-WS22-3678	4	39	18

### NOTES:

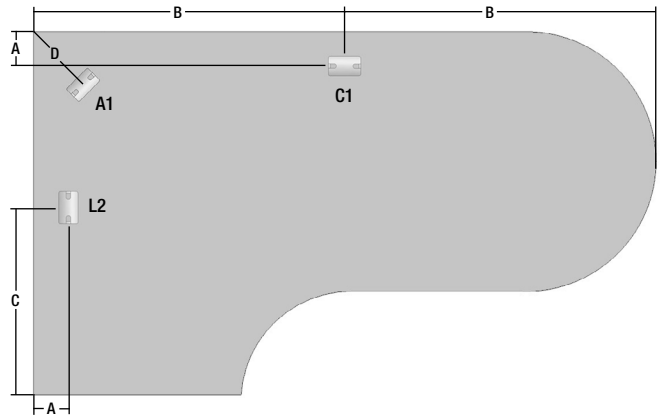
- C1 is not compatible with 2" thick hanging modesty panels (TX-2MOD). All other hanging modesty panels may only be used if placed flush to the approach edge of the worksurface.
- Pass Through Grommets are shown as rectangular steel grommet AC-GROM-35. Locations also apply to round black plastic grommet AC-GROM-1 and round steel grommet AC-GROM-6.

**42" Return Side with Hinged Grommet**



Item Code	A	B	C
TX-WS23-4266	5	33	21
TX-WS23-4272	5	36	21
TX-WS23-4278	5	39	21

**42" Return Side with Pass-Through Grommet**



Item Code	A	B	C	D
TX-WS23-4266	4	33	21	15
TX-WS23-4272	4	36	21	15
TX-WS23-4278	4	39	21	15

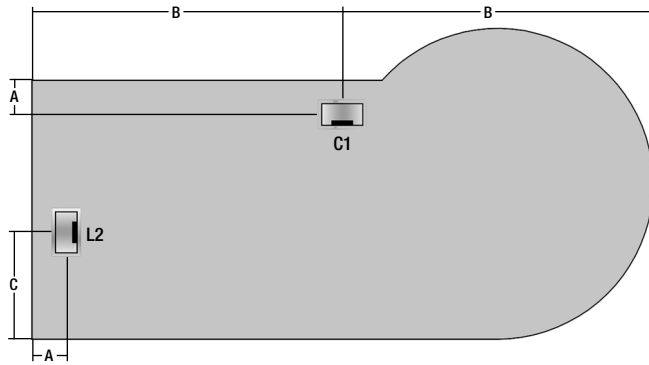
**NOTES:**

- C1 is not compatible with 2" thick hanging modesty panels (TX-2MOD). All other hanging modesty panels may only be used if placed flush to the approach edge of the worksurface.
- Pass Through Grommets are shown as rectangular steel grommet AC-GROM-35. Locations also apply to round black plastic grommet AC-GROM-1 and round steel grommet AC-GROM-6.



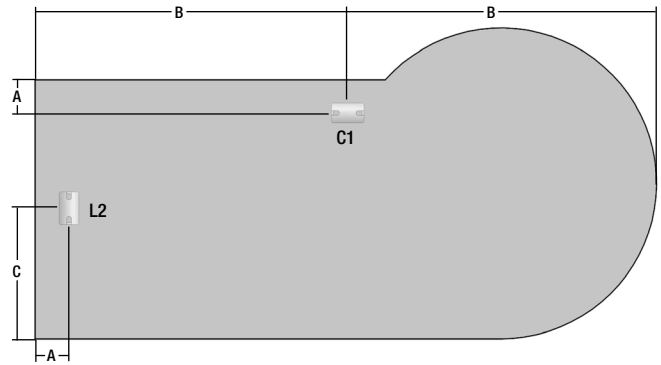
# P-TOP PENINSULA WORKSURFACES - TX-WS24-XXXX

## 30" Deep with Hinged Grommet



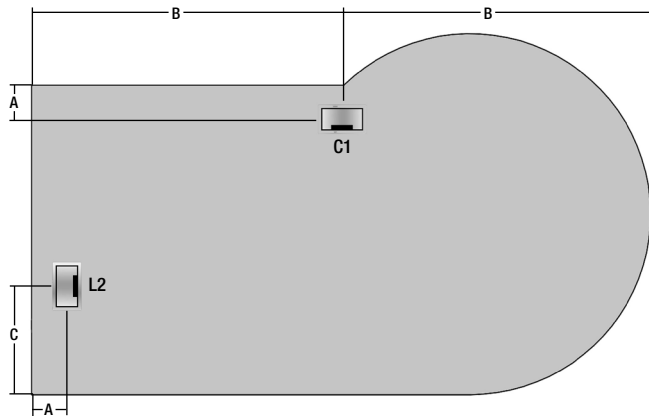
Item Code	A	B	C
TX-WS24-3060	5	30	12
TX-WS24-3066	5	33	12
TX-WS24-3072	5	36	12

## 30" Deep with Pass-Through Grommet



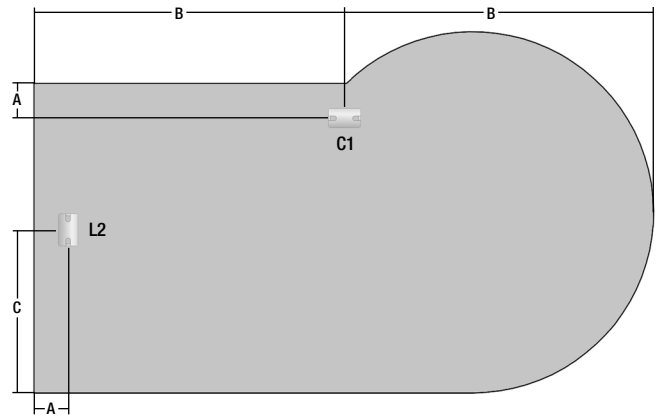
Item Code	A	B	C
TX-WS24-3060	4	30	15
TX-WS24-3066	4	33	15
TX-WS24-3072	4	36	15

## 36" Deep with Hinged Grommet



Item Code	A	B	C
TX-WS24-3672	5	36	12
TX-WS24-3678	5	39	12

## 36" Deep with Pass-Through Grommet



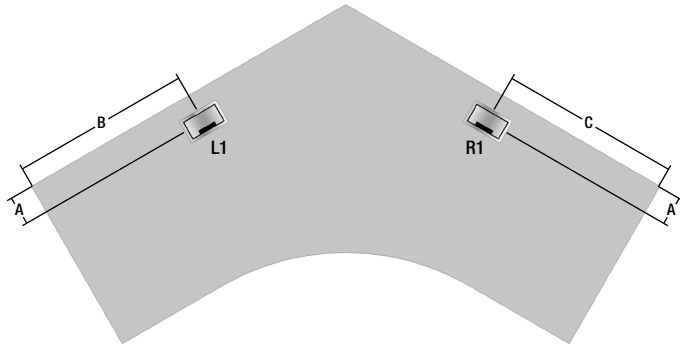
Item Code	A	B	C
TX-WS24-3672	4	36	18
TX-WS24-3678	4	39	18

### NOTES:

- C1 is not compatible with 2" thick hanging modesty panels (TX-2MOD). All other hanging modesty panels may only be used if placed flush to the approach edge of the worksurface.
- Pass Through Grommets are shown as rectangular steel grommet AC-GROM-35. Locations also apply to round black plastic grommet AC-GROM-1 and round steel grommet AC-GROM-6.

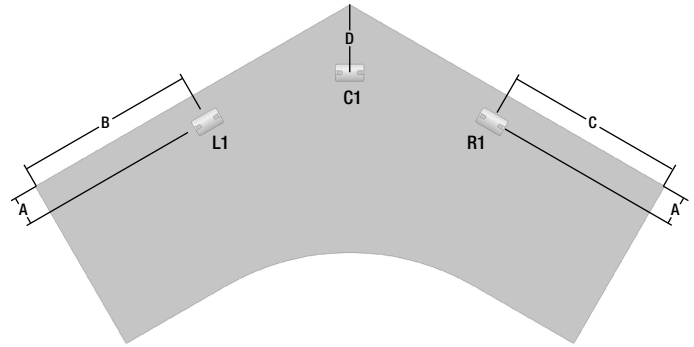
# 120 DEGREE CORNER WORKSURFACES - TX-WS45-XXXX

## 24" Deep with Hinged Grommet



Item Code	A	B	C
TX-WS45-4242	5	21	21
TX-WS45-4848	5	24	24
TX-WS45-5454	5	27	27

## 24" Deep with Pass-Through Grommet



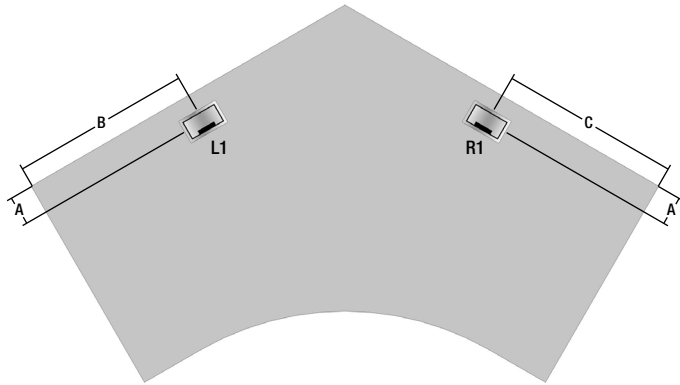
Item Code	A	B	C	D
TX-WS45-4242	4	21	21	15
TX-WS45-4848	4	24	24	15
TX-WS45-5454	4	27	27	15

### NOTES:

- C1 is not compatible with 2" thick hanging modesty panels (TX-2MOD). All other hanging modesty panels may only be used if placed flush to the approach edge of the worksurface.
- Pass Through Grommets are shown as rectangular steel grommet AC-GROM-35. Locations also apply to round black plastic grommet AC-GROM-1 and round steel grommet AC-GROM-6.

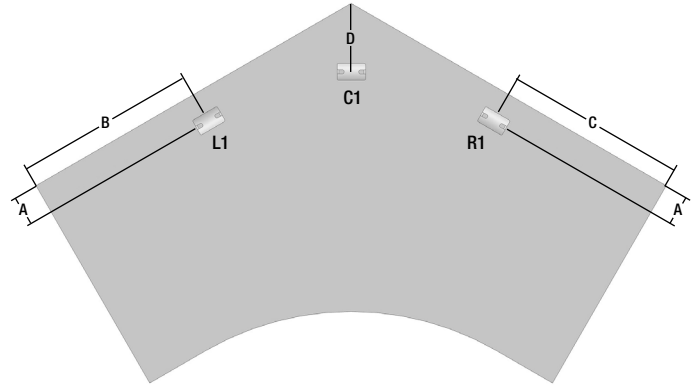
# 120 DEGREE CORNER WORKSURFACES - TX-WS46-XXXX

## 30" Deep with Hinged Grommet



Item Code	A	B	C
TX-WS46-4242	5	21	21
TX-WS46-4848	5	24	24
TX-WS46-5454	5	27	27

## 30" Deep with Pass-Through Grommet



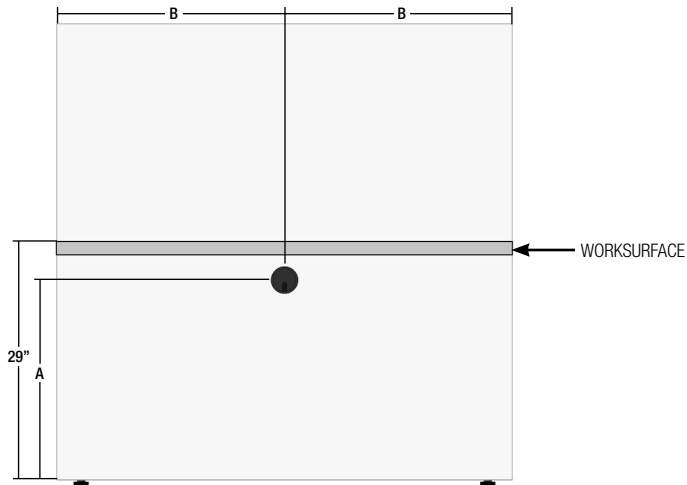
Item Code	A	B	C	D
TX-WS46-4242	4	21	21	15
TX-WS46-4848	4	24	24	15
TX-WS46-5454	4	27	27	15

### NOTES:

- C1 is not compatible with 2" thick hanging modesty panels (TX-2MOD). All other hanging modesty panels may only be used if placed flush to the approach edge of the worksurface.
- Pass Through Grommets are shown as rectangular steel grommet AC-GROM-35. Locations also apply to round black plastic grommet AC-GROM-1 and round steel grommet AC-GROM-6.

# SPINE WALLS - TX-SPWX-XXXX

## All Sizes with Round Grommet



### 36" High Spine Walls - All Types

Item Code	A	B
TX-SPWX-2436	25	12
TX-SPWX-3036	25	15
TX-SPWX-3336	25	16.5
TX-SPWX-3636	25	18
TX-SPWX-3936	25	19.5
TX-SPWX-4236	25	21
TX-SPWX-4836	25	24
TX-SPWX-5436	25	27
TX-SPWX-6036	25	30

### 42" High Spine Walls - All Types

Item Code	A	B
TX-SPWX-2442	25	12
TX-SPWX-3042	25	15
TX-SPWX-3342	25	16.5
TX-SPWX-3642	25	18
TX-SPWX-3942	25	19.5
TX-SPWX-4242	25	21
TX-SPWX-4842	25	24
TX-SPWX-5442	25	27
TX-SPWX-6042	25	30

### 48" High Spine Walls - All Types

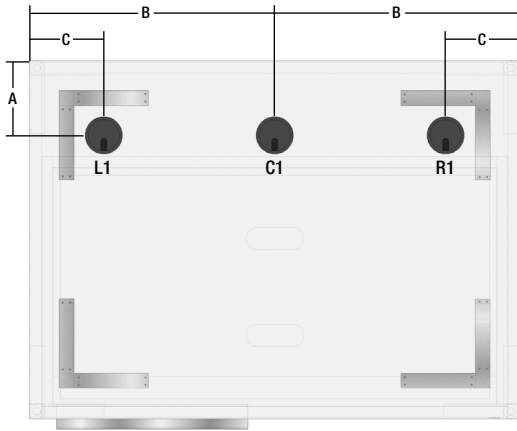
Item Code	A	B
TX-SPWX-2448	25	12
TX-SPWX-3048	25	15
TX-SPWX-3348	25	16.5
TX-SPWX-3648	25	18
TX-SPWX-3948	25	19.5
TX-SPWX-4248	25	21
TX-SPWX-4848	25	24
TX-SPWX-5448	25	27
TX-SPWX-6048	25	30

#### NOTES:

- Pass Through Grommets are shown as round black plastic grommet TX-OPT-GRO-1. Any other grommets are not available.

## CARGO HUBS- TX-HUBX-XXXX

### 24" Deep with Round Grommet



Item Code	A	B	B
TX-HUBX-2417	5	8.5	5
TX-SPWX-2425	5	12.5	5
TX-SPWX-2433	5	16.5	5
TX-SPWX-2449	5	24.5	5
TX-SPWX-2465	5	32.5	5

### 30" Deep with Round Grommet

Item Code	A	B	B
TX-HUBX-3017	5	8.5	5

#### NOTES:

- Grommets are only available on 24" deep Cargo Hubs with 13" or 17" deep inserts. 30" deep Cargo Hubs may be specified with grommets and inserts.
- Pass Through Grommets are shown as round black plastic grommet TX-OPT-GRO-1. Locations also apply to round steel grommet TX-OPT-GRO-6. Any other grommets are not available.
- Please note: Cargo Hubs with Adjustable Glides do not have enough clearance to run power out of the bottom of the units.